

# San Francisco International Airport

San Francisco, CA - Departure Area Sidewalk Repair

## INSTALLER

DONALD S. MACLEAN, INC. – SAN FRANCISCO, CA

## FEATURED PRODUCTS:

- ARDEX CD FINE™ CONCRETE DRESSING



engineered  
concrete repair  
systems

## CHALLENGE

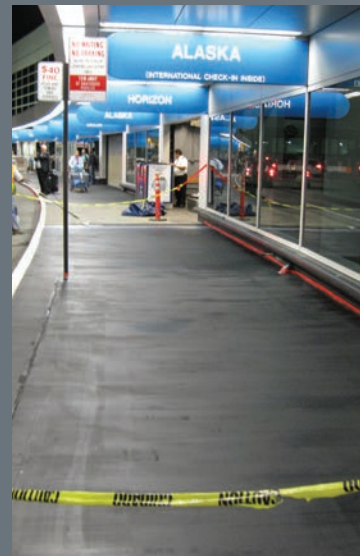
- Operational airport
- 50,000 square feet of spalled concrete

## PROBLEM

ARDEX Sales Professional Mark Pacheco assisted the San Francisco International Airport Facility Management Department and resolved a ramping issue at an airport restaurant with ARDEX SD-P® Self-Drying, Fast Setting Concrete Underlayment. While at the site, Pacheco noticed the sidewalks around the airport departure area were spalled and damaged. Pacheco brought the issue of the damaged sidewalks to the attention of head of the facilities department.

## SOLUTION

Only two days later, Pacheco prepared a demo of ARDEX CD FINE™ Concrete Dressing with color. ARDEX CD is a concrete resurfacing product that is easy to install. It makes damaged and spalled concrete look like new without having to tear out and replace the slab. Airport management loved what they saw and chose to go with black for the sidewalk color because it would hide stains. Pacheco recommended Donald S. MacLean, Inc., (DSM) as the installer for the project. DSM was awarded the job and began work on the departure level sidewalks. Because of the outstanding performance of ARDEX CD, the project expanded from an original 50,000 square feet of sidewalk to include island areas and curbs, an additional 40,000 square feet of concrete surface area. The facility manager for the airport was so pleased with the results at the departure level that the arrival level was added for completion.



YOUR BEST CHOICE FOR  
INSTALLATION SUCCESS

888-512-7339  
[www.ardexamericas.com](http://www.ardexamericas.com)