



ARDEX TerraMaxx®

Cement Pedestal Drainage System

Installation Guide for Balconies, Patios and Other Surfaces Not Over Living Spaces*

Innovative, capillary-passive water management system

For pre-sloped exterior wood or concrete balconies, patios, terraces, etc.

Helps prolong the life of exterior paver applications

Minimizes disbonding risk due to freeze and thaw cycling

Minimizes the risk of efflorescence, staining and discoloration

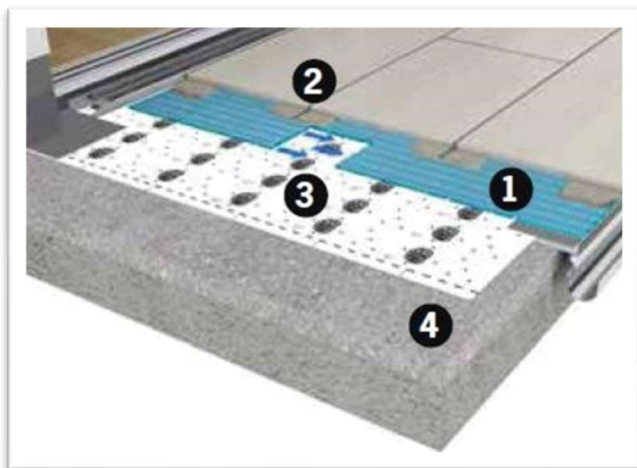
Grout joints are to be left open or filled with a flexible silicone sealant

***For installations over living spaces, there must be an intact roofing membrane already in place**

ARDEX TerraMaxx®

Cement Pedestal Drainage System

System Design



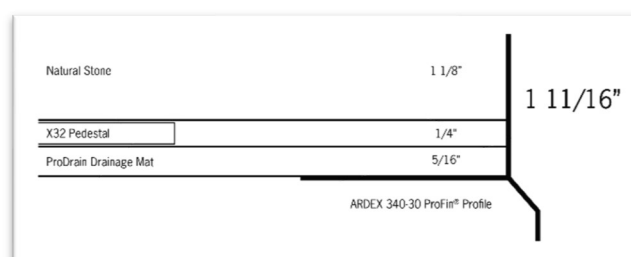
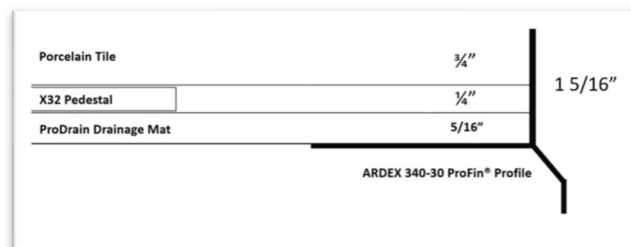
Components Shown

1. ARDEX ProDrain® Drainage Mat
2. ARDEX X 32™ MICROTEC®
3. ARDEX SK 175™ Waterproofing and Vapor Retarder Membrane
4. 1.5 to 2% sloped substrate

Other Components

- Sloping and smoothing materials (as needed)
- ARDEX SX 100% Silicone Sealant (joints may also be left open; rigid grouts are not used)
- Accessories - see below

Minimum Height Details



Suitable Substrates

Surfaces NOT over living spaces:

- Exterior wood (pre-sloped)
- Exterior concrete

For installations over living spaces, an intact roofing membrane must be already in place.

Suitable Applications

Installation of porcelain pavers (minimum size 12 x 12" / 30 x 30 cm; minimum thickness 3/4" / 2 cm)

Installation of stone pavers; minimum size 12 x 12" (30 x 30 cm; minimum thickness 1 1/8" / 3 cm depending on the breaking point listed by the manufacturer)

Job Conditions

During installation and cure, substrate and ambient temperatures must be a minimum of 50°F / 10°C and a maximum of 85°F / 29°C. Substrate must also be dry.

Step 1: Substrate Preparation (Proper Prep™)

If necessary, mechanically clean the substrate by shot blasting or similar means. Do not use acid etching, adhesive removers, solvents or sweeping compounds, as these are bond breakers. Sanding is not an effective method to remove contaminants from concrete.

All substrates must be sound, solid and thoroughly clean of all existing patching and leveling materials and all bond-breaking contaminants, including but not limited to: overwatered or otherwise loose or weak material; unapproved sealers; all adhesive residues.

Handle and dispose of asbestos and other hazardous materials in accordance with prevailing regulations, which supersede the recommendations in this document.

Vacuuming

Following preparation, thoroughly vacuum to remove all excess dirt and debris.

For full details on Proper Prep, reference the following articles at ardexamericas.com/properprep:

- Article 1: Preparing Concrete for Bonded ARDEX or HENRY Applications
- Article 2: Preparing Wood for Bonded ARDEX Applications
- Proper Prep Brochure

The plane of wall surfaces must be plumb and true. Floor surfaces must have minimal variation in the plane or slope as outlined by the Tile Council of North America (TCNA). Refer to ANSI A108.01 "General Requirements: Subsurface and Preparation by Other Trades" and the most current version of the TCNA "Handbook for Ceramic Tile Installation" for detailed information on surface preparation and guidelines for substrate construction.

It must be verified that the substrate is sufficiently sound to support the installation weight; verify with a structural engineer as necessary.

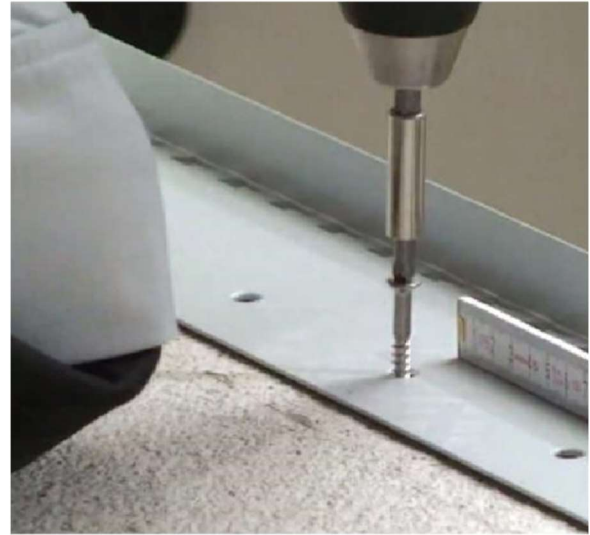
Step 2: Pre-Sloping / Smoothing Options (if needed)

ARDEX AM 100™ Rapid Set Pre-Tile Smoothing and Ramping Mortar

ARDEX A 38™ Rapid Set Screed

Substrate must be flat and smooth with a 1.5 - 2% slope prior to installation. Observe the substrate preparation, mixing, application and drying instructions in the appropriate ARDEX technical data sheet. Per ANSI A 108 AN-3.7, expansion joints must be provided over existing moving joints and moving cracks and where substrate materials change composition or direction.

Step 3: Profile Installation (optional)



If a profile is desired, pre-drill pilot holes, insert fastener plugs and apply ARDEX CA 20 P™ Multi-Purpose Construction Adhesive and Sealant to the underside of the profile (every 3 holes, minimum).

Screw ARDEX UP 340-30 ProFin® edge profile into position onto the existing base. Leave a minimum 3/16" (5 mm) gap between profile units and corner accessories. Use the screws and fasteners provided. Fix screws at either end of the profile and every 20" (50 cm). Snap on the ARDEX UP 309 ProFin® profile connectors and ARDEX UP 325 ProFin® 30 mm backsplash clips.

Use the self-adhesive ARDEX US 420 ProDrain® Tape as a seal between the profile and the substrate. Fix the plastic side to the edge profile (do not cover drainage holes) and the fleece side to the substrate and flatten down with a roller.

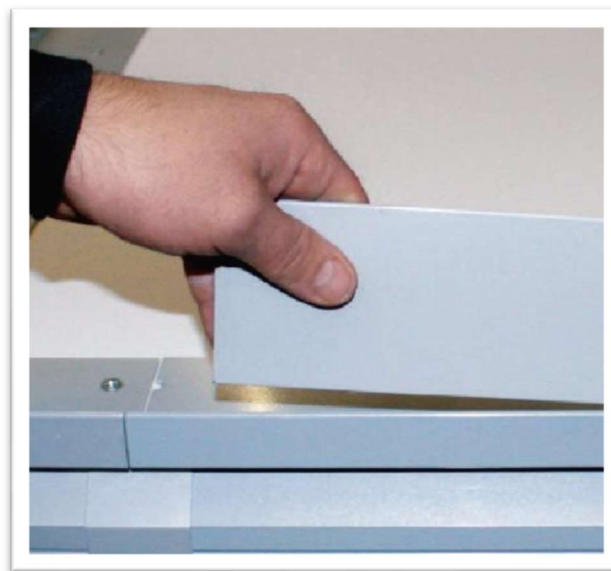
Step 4: ARDEX SK 175 Membrane Installation



Install ARDEX SK 175™ Membrane as a Vapor Retarder* with an ARDEX Mortar over the sloped substrate and place up to the plastic side of the ARDEX US 420 ProDrain® Tape, covering the fleece. Please refer to the ARDEX SK 175 technical data sheet for application information.

Do not penetrate the membrane, including fixing any posts or railings once the draining system is installed.

* ARDEX SK 175™ is NOT a replacement for waterproofing protection over occupied living spaces. Applications over occupied living spaces require an existing, intact primary roofing membrane prior to the installation of an ARDEX Exterior System. ARDEX SK 175 is to provide protection against vapor transmission from the substrate.



ARDEX ProFin® Profiles	Profile Height	ARDEX UP 380-49 ProFin® Face Plate	ARDEX UP 390-69 ProFin® Face Plate
ARDEX UP 310-11 ProFin Profile	11mm	60mm	80mm
ARDEX UP 330-21 ProFin Profile	21mm	70mm	90mm
ARDEX UP 340-30 ProFin Profile	20mm	70mm	90mm

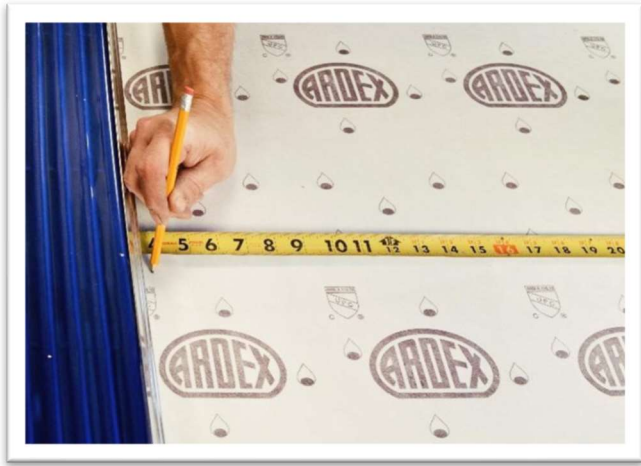
Step 5: Faceplate Installation (if needed)

Installations using 3/4" (1.9 cm) porcelain pavers do not typically require a faceplate when ARDEX UP 340-30 ProFin® profile has been installed. For thicker pavers or natural stone assemblies, ARDEX ProFin® faceplates can be used in conjunction with ARDEX UP ProFin® profiles. See profile and faceplate combination height options for complete details.

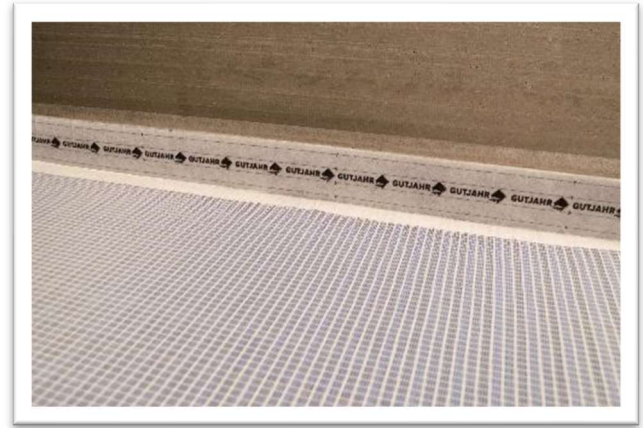
To install an ARDEX UP Faceplate, simply clip onto the mechanically anchored profile. Corner trims are also available as needed. Leave a 3/16" (5 mm) gap between metals. Clip on connectors to bridge the gap. Use ARDEX CA 20 P for additional strength.

Step 6: Drain Assembly Setting (as needed)

ARDEX UG 262-10 ProDrain® Drain Assembly may be installed in front of doorways to prevent water intrusion. To set, first remove the drain grate from the drain housing and thread the adjustable legs into the bottom side of the housing. Place the provided plastic pads beneath the drain legs to provide additional support over the drainage mat.



Step 8: Installation of Perimeter Strip



Once the mat is laid, install the self-adhesive ARDEX UD 146® Edge Insulation Strip around the edges of the installation and the ARDEX UG 203 ProDrain® Joint Tape around the drain housing. This allows movement between different materials and ensures the required 3/8" (10 mm) gap around the perimeter. After the tile is set, cut the edge insulation strip to the required height.

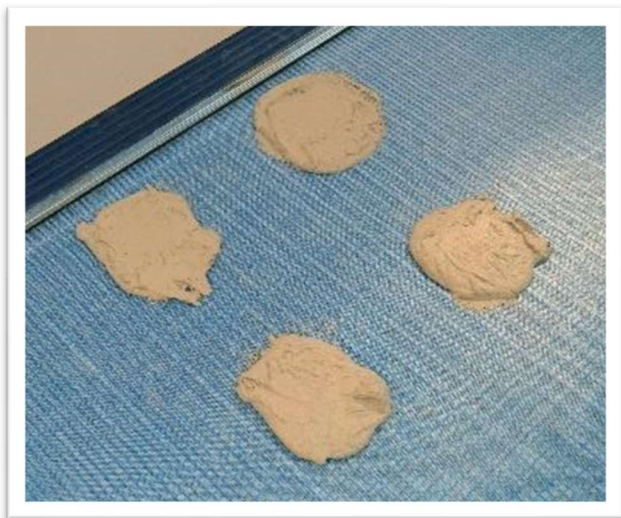
Step 7: Drainage Mat Installation



Roll the mat into place and cut to size using ARDEX FLEXBONE® Shears or a utility knife. Ensure that the waterproofing or vapor retarder membrane is not cut.

NOTE: Roll the mat with the drainage channels facing the direction of the slope. Always ensure that the self-adhesive tape on the mat is facing outwards to allow the next mat to abut neatly. Use ARDEX UD 157 ProDrain® Seam Reinforcement Tape to join any roll ends.

Step 9: Paver Installation

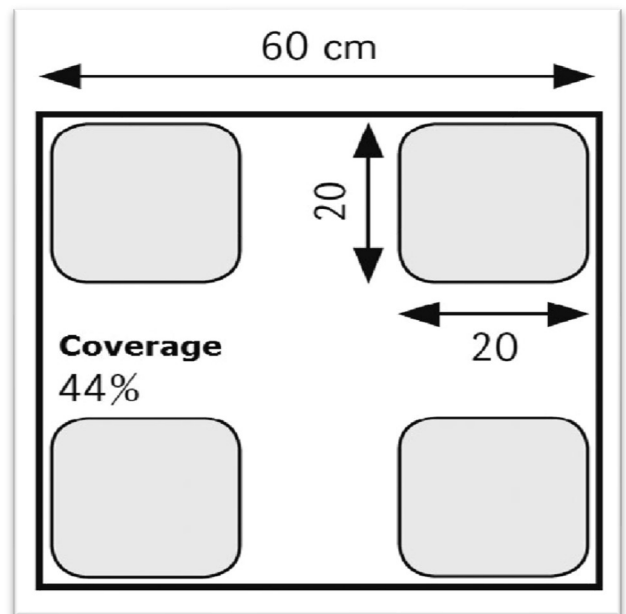


Mix ARDEX X 32 in accordance with its technical data sheet.

To install the porcelain pavers (minimum 3/4" / 2 cm thick) or the natural stone (minimum 1 1/8" / 3 cm), apply pedestals of mortar (minimum 5/32" [4 mm] thick) at a distance not exceeding 8" (20 cm), ensuring all four corners of the pavers are fully supported. Please note that the pavers must be flush with or slightly above the profile top.

Do not block the drainage holes on the profiles or cover the entire drainage mat with mortar. Please note that filling the drainage mat with mortar will prohibit water from escaping and void the system warranty.

Example Detail



Step 10: Joint Sealant Installation (if desired)



Allow the mortar to dry as detailed in the technical data sheet, and then clean the grout joints of any excess mortar. Also, clean the paver surface and allow to dry. Once the surface is dry, ARDEX SX™ 100% Silicone Sealant can be used to apply a soft bead of sealant in the joints and around the perimeter. Joints may also be left open.

Notes

FOR PROFESSIONAL USE ONLY by licensed, bonded contractors who are trained in the application of this product and/or similar products. Not sold by ARDEX through home improvement centers. For information on ARDEX Academy trainings, visit ardexamericas.com.

Observe the basic rules of concrete work, including the minimum surface and air temperatures detailed above. Install quickly if the substrate is warm, and follow the warm weather installation guidelines available on our website. Observe the basic rules of tile work.

In accordance with industry standards, and to determine the suitability of the products for the intended use, always install an adequate number of properly located test areas.

Dispose of packaging and residue in accordance with prevailing regulations. Do not flush material down drains. Do not reuse packaging.

Made in the USA and Germany.

Copyright 2021 ARDEX, L.P. All rights reserved. Content updated 2021-12-08. Supersedes all previous versions. Latest version available at ardexamericas.com. For technical updates, visit ardexamericas.com/services/technical-services/techupdates.

Technical Data According to ARDEX Quality Standards

Storage and Transport:	Store and transport rolls vertically in the original packaging. Store in temperatures from 32°F - 72°F (0°C - 22°C), and protect from sunlight.
Warranty:	Eligible for the ARDEX Exterior Drainage System 5 -Year Limited Warranty. See ardexamericas.com/services/warranties for full warranty details.

System Components and Available Accessories

System	Product	Description	Image	Size
Waterproofing	ARDEX US 420 ProDrain®	Flashing Tape		65.6 ft. (20 m)
Matting	ARDEX UE 190-8 ProDrain®	Drainage Mat		107.6 sq ft. (10 sq. m)
Matting	ARDEX UD 153-10 or 154-25 Universal Seam Tape	Seam Reinforcement Tape		32.8 ft. (10 m)
Drain Kit	ARDEX UG 221-10 ProDrain®	Drain Housing and Grate		3.3 ft. (1 m)
Drain Kit	ARDEX UG 262-10 ProDrain®	Drain Feet and Stabilizing Pads		3 Pads + 6 Drain Feet /Kit
Drain Kit	ARDEX UG 221-10 ProDrain®	Drain Endcap (x2)		2 / Unit
Drain	ARDEX UG 203 ProDrain®	Drain Grate Expansion Tape		8.2 ft. (2.5 m)
Drain	ARDEX UG 201 ProDrain®	Mounting Plate		3.3 ft. (1 m)

The above components are suggested for standard assembly heights. Additional options are available for systems that require installation heights greater than 1 5/16".

Visit www.youtube.com/ARDEX101 to watch ARDEX product demonstration videos. For recommended installation tools, visit DTA USA at www.dtausagroup.com. For easy-to-use ARDEX Product Calculators and Product Information On the Go, download the ARDEX App.



ARDEX Americas
400 Ardex Park Drive
Aliquippa, PA 15001 USA
888-512-7339
www.ardexamericas.com