



---

# ARDEX TerraMaxx<sup>®</sup> TSL

## Pedestal System

### Installation Guide for Balconies, Patios and Other Surfaces Not Over Living Spaces\*

---

Raised flooring supports for approved 2 cm porcelain pavers and approved 3 cm natural stone

For pre-sloped exterior wood or concrete balconies, patios, terraces, etc.

Helps prolong the life of exterior tile and stone applications

Easy level and pitch adjustments (no tools required)

Pre-assembled in 5 sizes and adapter (80 mm)

Adjustable height from 1" to 7 7/8"

Integrated tile / stone spacers 1/16" (2 mm) with available spacer attachment to expand to 5 mm

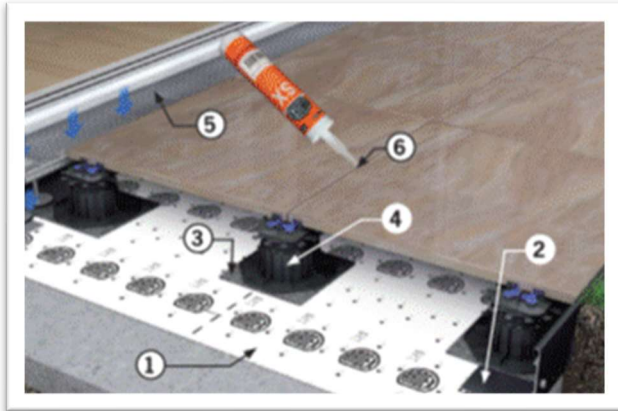
Built-in sound dampener reduces sound up to 30 dB

\*For installations over living spaces, there must be an intact roofing membrane already in place

# ARDEX TerraMaxx® TSL

## Pedestal System

### System Design



### Components Shown

Begin with a 1.5 to 2% sloped substrate

1. ARDEX SK 175™ Waterproofing and Vapor Retarder Membrane (optional)
2. ProFin® KL Profile
3. ARDEX TerraMaxx® TSL Pad
4. ARDEX TerraMaxx TSL Pedestal
5. ARDEX ProDrain® Drain
6. ARDEX SX™ 100% Silicone Sealant, or joints can be left open; no rigid grouts are used
7. Sloping and smoothing materials (as needed)

### Suitable Substrates

Surfaces NOT over living spaces:

- Exterior wood (pre-sloped)
- Exterior concrete

For installations over living spaces, an intact roofing membrane must be already in place.

### Suitable Applications

- Installation of porcelain pavers (minimum size 12 x 12" / 30 x 30 cm; minimum thickness 3/4" / 2 cm)
- Installation of stone pavers; minimum size 12 x 12" (30 x 30 cm; minimum thickness 1 1/8" / 3 cm depending on the breaking point listed by the manufacturer)

Note: All pavers must be manufacturer-approved for pedestal system installation.

### Job Conditions

During installation and cure, substrate and ambient temperatures must be a minimum of 50°F / 10°C and a maximum of 85°F / 29°C. Substrate must also be dry.

### Pedestal Configuration

On average, an estimate of two (2) pedestals per paver can be used to determine the number of pedestals that will be needed. Longer and plank style pavers may require three (3) pedestals. Every job is different. To determine the proper configuration, including the number of pedestals and the pedestal sizes required, please call the ARDEX Technical Service Department at 888-512-7339.

### Step 1: Substrate Preparation (Proper Prep™)

If necessary, mechanically clean the substrate by shot blasting or similar means. Do not use acid etching, adhesive removers, solvents or sweeping compounds, as these are bond breakers. Sanding is not an effective method to remove contaminants from concrete.

All substrates must be sound, solid and thoroughly clean of all existing patching and leveling materials and all bond-breaking contaminants, including but not limited to: overwatered or otherwise loose or weak material; unapproved sealers; all adhesive residues.

### Vacuuming

Following preparation, thoroughly vacuum to remove all excess dirt and debris.

For full details on Proper Prep, reference the following articles at [ardexamericas.com/properprep](http://ardexamericas.com/properprep):

- Article 1: Preparing Concrete for Bonded ARDEX or HENRY Applications
- Article 2: Preparing Wood for Bonded ARDEX Applications
- Proper Prep Brochure

The plane of wall surfaces must be plumb and true. Floor surfaces must have minimal variation in the plane or slope as outlined by the Tile Council of North America (TCNA). Refer to ANSI A108.01 "General Requirements: Subsurface and Preparation by Other Trades" and the most current version of the TCNA "Handbook for Ceramic Tile Installation" for detailed information on surface preparation and guidelines for substrate construction.

It must be verified that the substrate is sufficiently sound to support the installation weight; verify with a structural engineer as necessary.

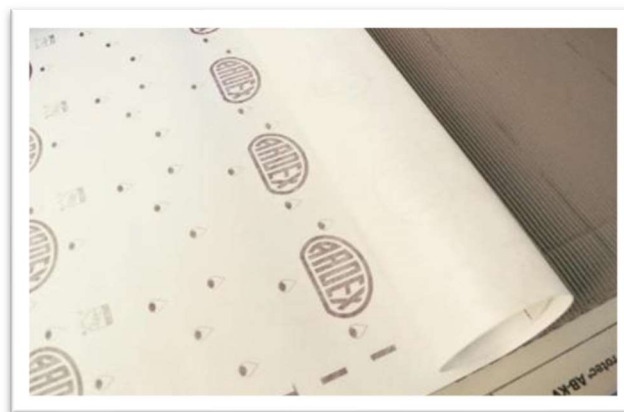
### **Step 2: Pre-Sloping / Smoothing Options (if needed)**

ARDEX AM 100™ Rapid Set Pre-Tile Smoothing and Ramping Mortar

ARDEX A 38™ Rapid Set Screed

Substrate must be flat and smooth with a 1.5 - 2% slope prior to installation. Observe the substrate preparation, mixing, application and drying instructions in the appropriate ARDEX technical data sheet. Per ANSI A 108 AN-3.7, expansion joints must be provided over existing moving joints and moving cracks and where substrate materials change composition or direction.

### **Step 3: ARDEX SK 175 Membrane Installation (Optional)**



Install ARDEX SK 175™ Membrane as a Vapor Retarder\* with an ARDEX Mortar over the sloped substrate and place up to the plastic side of the ARDEX US 420 ProDrain® Tape, covering the fleece. Please refer to the ARDEX SK 175 technical data sheet for application information.

Do not penetrate the membrane, including fixing any posts or railings once the draining system is installed.

\* ARDEX SK 175™ is NOT a replacement for waterproofing protection over occupied living spaces. Applications over occupied living spaces require an existing, intact primary roofing membrane prior to the installation of an ARDEX Exterior System. ARDEX SK 175 is to provide protection against vapor transmission from the substrate.

#### Step 4: Installation of Edge Profiles



Place ProFin® KL Edge Profiles on the outside edge of the installation to protect the installation from gravel, dirt and debris, as well as provide a finished look in exposed areas.



#### Step 5: Placing Pedestals Against a Wall

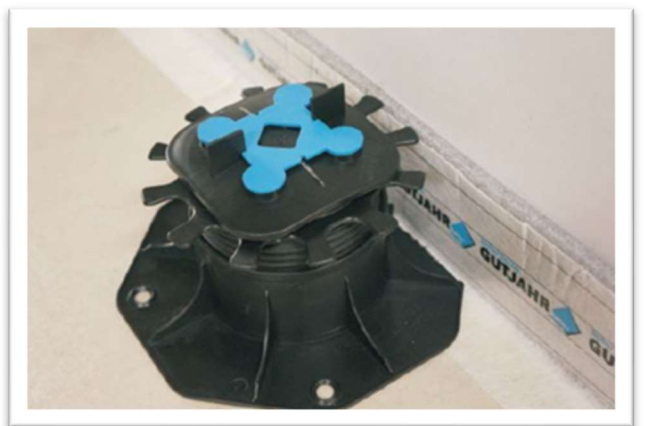
Remove spacer tabs to permit proper paver placement. (If necessary).



Cut the bottom of the pedestal with a hand grinder or similar tool.



Place the cut pedestal next to the wall.

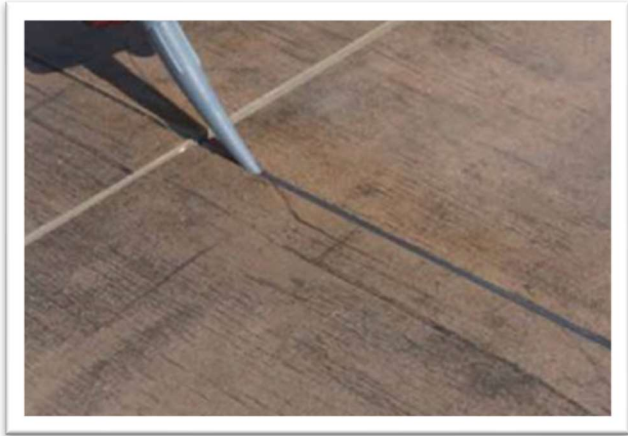


## Step 6: Paver Installation

Install manufacturer-approved pavers.

## Step 7: Finishing with ARDEX Sealant (Optional)

ARDEX SX™ 100% Silicone Sealant can be used to apply a soft bead of sealant in the joints and around the perimeter. Joints may also be left open.



## Notes

FOR PROFESSIONAL USE ONLY by licensed, bonded contractors who are trained in the application of this product and/or similar products. Not sold by ARDEX through home improvement centers. For information on ARDEX Academy trainings, visit [ardexamericas.com](http://ardexamericas.com).

Observe the basic rules of concrete work, including the minimum surface and air temperatures detailed above. Install quickly if the substrate is warm, and follow the warm weather installation guidelines available on our website. Observe the basic rules of tile work.

In accordance with industry standards, and to determine the suitability of the products for the intended use, always install an adequate number of properly located test areas.

Dispose of packaging and residue in accordance with prevailing regulations. Do not flush material down drains. Do not reuse packaging.

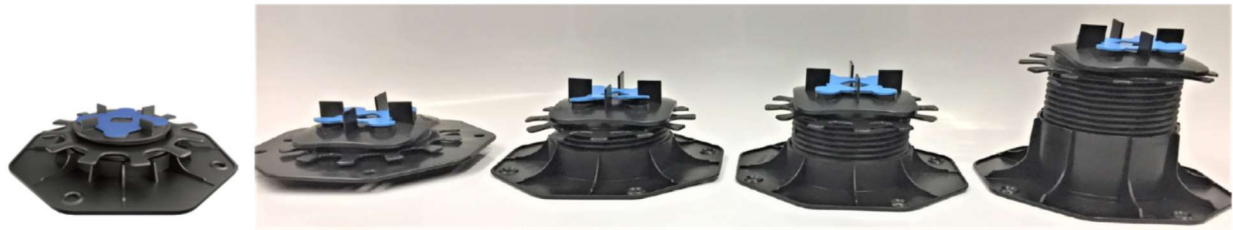
Made in the USA and Germany.

Copyright 2021 ARDEX, L.P. All rights reserved. Content updated 2021-11-22. Supersedes all previous versions. Latest version available at [ardexamericas.com](http://ardexamericas.com). For technical updates, visit [ardexamericas.com/services/technical-services/techupdates](http://ardexamericas.com/services/technical-services/techupdates).

## Technical Data According to ARDEX Quality Standards

<b>Warranty:</b>	Eligible for the ARDEX Exterior Drainage System 5 -Year Limited Warranty. See <a href="http://ardexamericas.com/services/warranties">ardexamericas.com/services/warranties</a> for full warranty details.
------------------	---

## System Components and Available Accessories



TSL T Variante XS 26/36 mm

TSL S - 36/43 mm

TSL M - 43/60 mm

TSL L - 58/75 mm

TSL XL - 75/120 mm

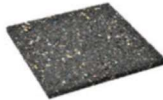
<b>TerraMaxx® TSL-XS</b> 26/36 mm (no leveling head)
<b>TerraMaxx® TSL-S</b> 36/43 mm
<b>TerraMaxx® TSL-M</b> 43/60 mm
<b>TerraMaxx® TSL-L</b> 58/75 mm
<b>TerraMaxx® TSL-XL</b> 75/120 mm
<b>TerraMaxx® TSL Adaptor</b> - 3.15" (80mm)
<b>TerraMaxx® TSL Plug-In Spacer</b> - Bags of 100
<b>TerraMaxx® Distance Holder</b> - Maintains spacing against walls
<b>TerraMaxx® TSL Pad</b> - 7.5" x 7.5" x 1/3" (192/192/8 mm) - Packs of 10 Pads
<b>ProFin® KL Profiles</b> - Aluminum drainage profile, Height and slope adjustable



Adapter



Spacer



Pad



Distance Holder



KL Profile

Visit [www.youtube.com/ARDEX101](http://www.youtube.com/ARDEX101) to watch ARDEX product demonstration videos. For recommended installation tools, visit DTA USA at [www.dtausagroup.com](http://www.dtausagroup.com). For easy-to-use ARDEX Product Calculators and Product Information On the Go, download the ARDEX App.



**ARDEX Americas**  
 400 Ardex Park Drive  
 Aliquippa, PA 15001 USA  
 888-512-7339  
[www.ardexamericas.com](http://www.ardexamericas.com)