



www.ardexamericas.com



ARDEX FLEXBONE®

Uncoupling and In-Floor Heating Systems

Innovative, Thoughtful Design for Maximum
Protection, Efficiency and Performance



ARDEX FLEXBONE®

Uncoupling and In-Floor Heating Systems

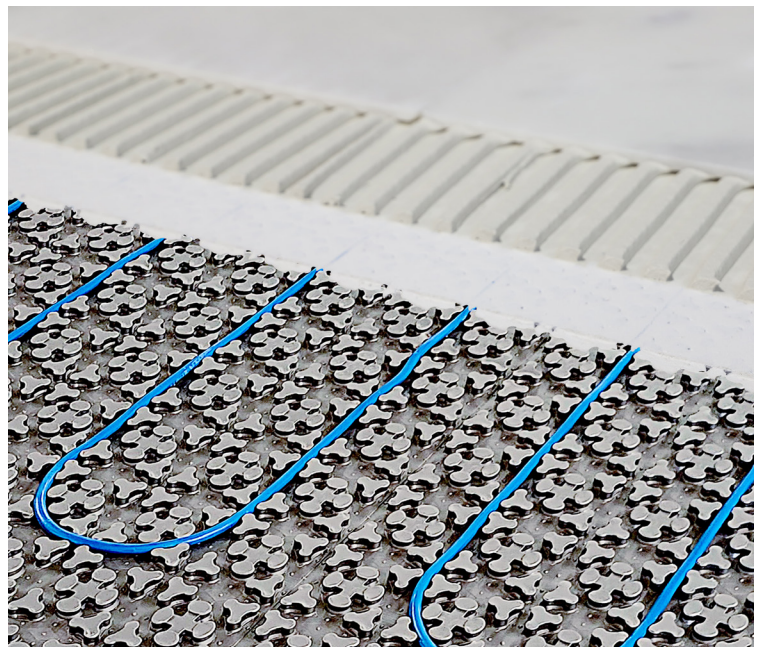
Advanced Technology and Design

The unique FLEXBONE® open bone-shape design provides many benefits to the installer, most notably the ability to easily and quickly pre-fill the membrane in just one pass!



**EASY FILL
IN JUST
ONE PASS!**

Continuous mortar connection throughout the membrane is a unique feature only found in the FLEXBONE® design delivering more strength and conductivity versus traditional membranes. The innovative GripLock Technology provides up to 50% more tensile bond strength, and installers appreciate that FLEXBONE® Membranes have very little memory, rolling out flat, saving time and headaches!



Innovative, Thoughtful Design for Maximum Protection, Efficiency and Performance

Meeting the growing demand for in-floor heating systems, ARDEX takes innovation and quality to a new level!

ARDEX FLEXBONE HEAT Systems are thoughtfully designed to be easy to install, **highly reliable and energy efficient using up to 11% less energy** while delivering warm, comfortable heat faster to where you want it... your bare feet!

A single-source, complete system solution backed by the ARDEX FLEXBONE® HEAT 10-Year Warranty.

ARDEX FLEXBONE® HEAT Membrane

In-Floor Heating Systems, 4-in-1 Membrane

- In-Floor Heating
- Uncoupling
- Waterproofing
- XL Uncoupling 1/4" (6 mm) thickness for a seamless transition with hardwood and other raised flooring

Maximum Energy and Heat Efficiency

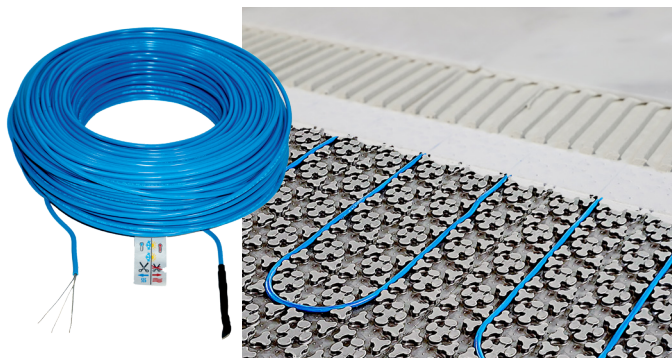
- Less membrane contact with the heat cables for maximum heat conductivity
- Up to 81% less air space allowing heat to warm the floor covering faster



Ease of Installation

- **Pre-fill in just one pass!**
- Very little roll memory, rolls out flat every time!
- Use ARDEX self-leveling for faster pre-fill and safer encapsulation of the cables





ARDEX FLEXBONE® HEAT Cables

Engineered with the highest level of safety standards, heating performance and energy efficiency.

- 34 cable sizes in 120V and 240V options
- Hot/Cold lead contained within the cable, no bulky junction box to bury
- Heat Sensor Wire included with every cable (one also included with every thermostat)
- All cable sizes have the same diameter for an easy, secure fit
- Less cable required per square foot

Available FLEXBONE® Heating Cables (120 volt)

Product Name	SAP#	Voltage	Heat Area (sq. ft.)	Heat Area (m²)	Cable Length (ft.)	Cable Length (m)
ARDEX UH 910-15	30032	120	15	1.4	39.6	12.1
ARDEX UH 910-22	30033	120	21.5	2	57.9	17.7
ARDEX UH 910-28	30034	120	28	2.6	78	23.8
ARDEX UH 910-36	30035	120	35.5	3.3	98	29.9
ARDEX UH 910-42	30036	120	42	3.9	118	36.0
ARDEX UH 910-49	30037	120	48.5	4.5	136.4	41.6
ARDEX UH 910-55	30038	120	55	5.1	156.4	47.7
ARDEX UH 910-63	30039	120	62.5	5.8	176.4	53.8
ARDEX UH 910-68	30040	120	68	6.3	196.4	59.9
ARDEX UH 910-81	30041	120	81	7.5	234.8	71.6
ARDEX UH 910-95	30042	120	95	8.8	274.8	83.8
ARDEX UH 910-108	30043	120	107.5	10	313.2	95.5
ARDEX UH 910-122	30044	120	121.5	11.3	353.2	107.7
ARDEX UH 910-134	30045	120	133.5	12.4	391.6	119.4
ARDEX UH 910-151	30046	120	150.5	14	439	133.8

Available FLEXBONE® Heating Cables (240 volt)

Product Name	SAP#	Voltage	Heat Area (sq. ft.)	Heat Area (m²)	Cable Length (ft.)	Cable Length (m)
ARDEX UH 910-15	30047	240	15	1.4	39.6	12.1
ARDEX UH 910-22	30048	240	21.5	2	57.9	17.7
ARDEX UH 910-28	30049	240	28	2.6	78	23.8
ARDEX UH 910-36	30050	240	35.5	3.3	98	29.9
ARDEX UH 910-42	30051	240	42	3.9	118	36.0
ARDEX UH 910-49	30052	240	48.5	4.5	136.4	41.6
ARDEX UH 910-55	30053	240	55	5.1	156.4	47.7
ARDEX UH 910-63	30054	240	62.5	5.8	176.4	53.8
ARDEX UH 910-68	30055	240	68	6.3	196.4	59.9
ARDEX UH 910-81	30056	240	81	7.5	234.8	71.6
ARDEX UH 910-95	30057	240	95	8.8	274.8	83.8
ARDEX UH 910-108	30058	240	107.5	10	313.2	95.5
ARDEX UH 910-122	30059	240	121.5	11.3	353.2	107.7
ARDEX UH 910-134	30060	240	133.5	12.4	391.6	119.4
ARDEX UH 910-151	30061	240	150.5	14	439	133.8
ARDEX UH 910-172	30062	240	172	16	510.8	155.7
ARDEX UH 910-194	30063	240	194	18	569.2	173.5
ARDEX UH 910-216	30064	240	215.5	20	635.5	193.7
ARDEX UH 910-248	30065	240	247.5	23	744.8	227.0



ARDEX FLEXBONE® HEAT Thermostats

• Remote WiFi Touch Thermostat

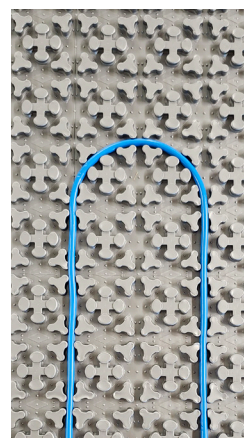
Simple, and easy control from anywhere with the “ARDEX HEAT” App, available for iOS and Android. Alexa and Google compatible

• Touch Programmable Model

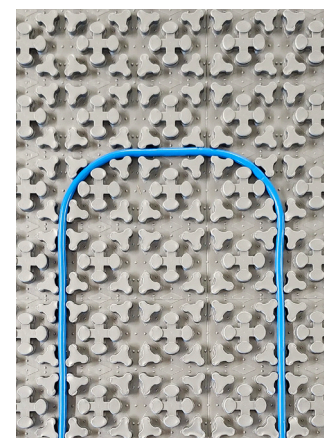
Easy and quick set-up for multiple programs; morning, evening, and more.

• Base Model – Simple on/off control

ARDEX FLEXBONE® HEAT Thermostats are backed by a 3-Year Product Warranty



1 BONE 1 BONE
STANDARD SPACING
2 BONES



1 BONE 1 BONE 1 BONE
COMFORT SPACING
3 BONES

LEAVING THE COMPETITION OUT IN THE COLD

TEMPERATURE ON SURFACE OF TILE

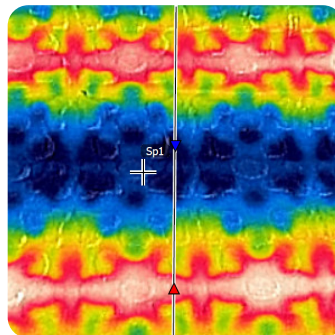
	Start	AFTER 30 MINUTES
ARDEX FLEXBONE® HEAT	65°F (18.4°C)	79.5°F (26.4°C)
Leading Competitor	65°F (18.4°C)	77.9°F (25.5°C)

The FLEXBONE® HEAT floor also stays warmer longer after the system is turned off. After turning the system off, **30 minutes later the FLEXBONE® HEAT floor is still 2 DEGREES WARMER!**

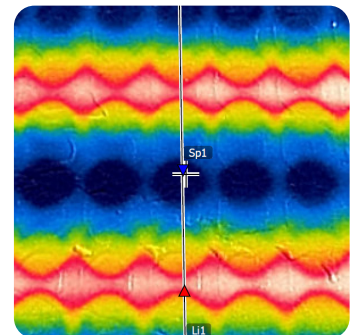


MORE **HEAT** less of a footprint!

- Better heat spread
- 11% less wattage required per sq. ft.
- Less cable required per sq. ft.



FLEXBONE® **HEAT** THERMAL IMAGE



COMPETITOR THERMAL IMAGE

The revolutionary, innovative design of the ARDEX FLEXBONE® **HEAT** system has outstanding energy efficiency and delivers more warmth faster, exactly where you want it...on your bare feet!

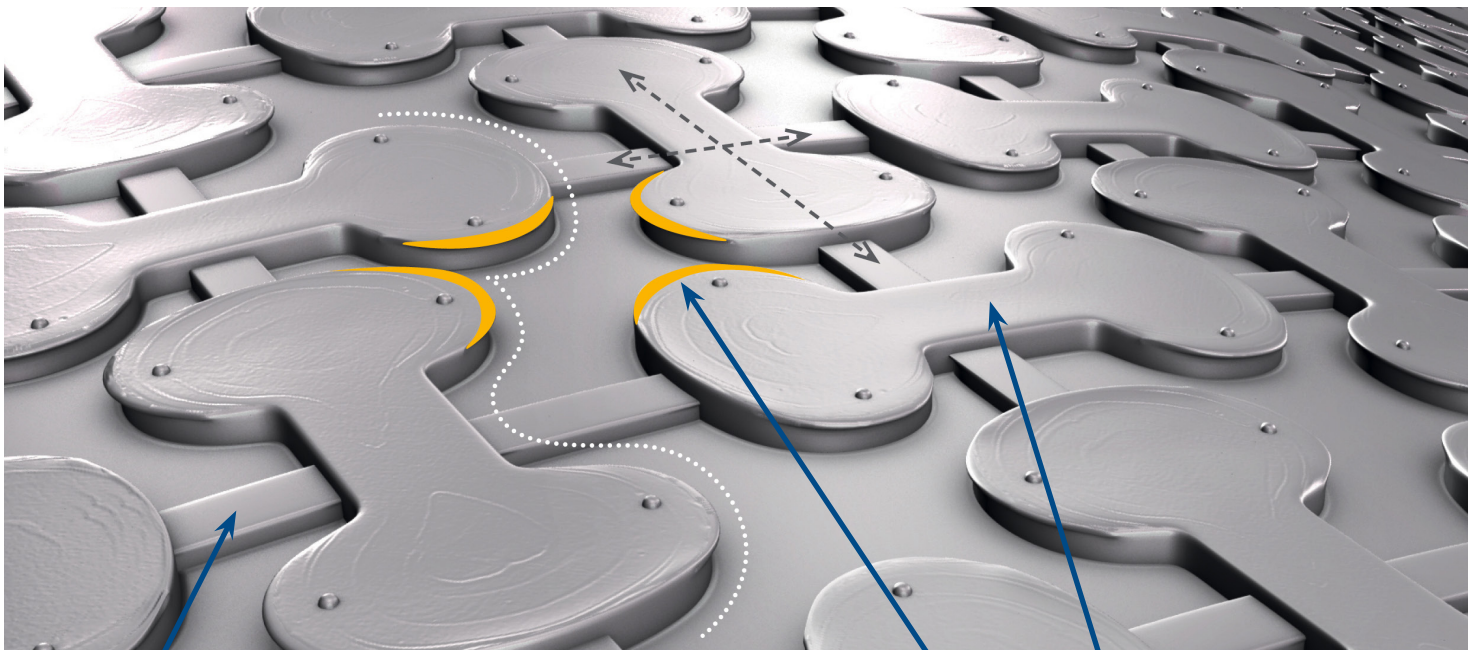
ARDEX UI 740™ FLEXBONE®

Uncoupling Membrane

ARDEX FLEXBONE® Uncoupling Systems

Tile continues to grow in popularity in residential and commercial venues, because it offers outstanding aesthetics, endless options, longevity, hygiene, easy care and is environmentally friendly.

Like any floor covering, tile installations come with its challenges. Subfloors, especially wood, go through various cycles of expansion and contraction due to changes in weather, moisture conditions, and more. These shear movements can cause tile buckling and cracks in grout joints. ARDEX FLEXBONE® Uncoupling Systems are uniquely designed to deliver maximum shear protection to counteract substrate movement. Up to 50% better shear and tensile bond strength vs. leading competitors.



Vapor Pressure Compensation Channels

- Releases moisture vapor from substrate

GripLock Technology

- Maximum tensile bond strength

Unique Bone Structure

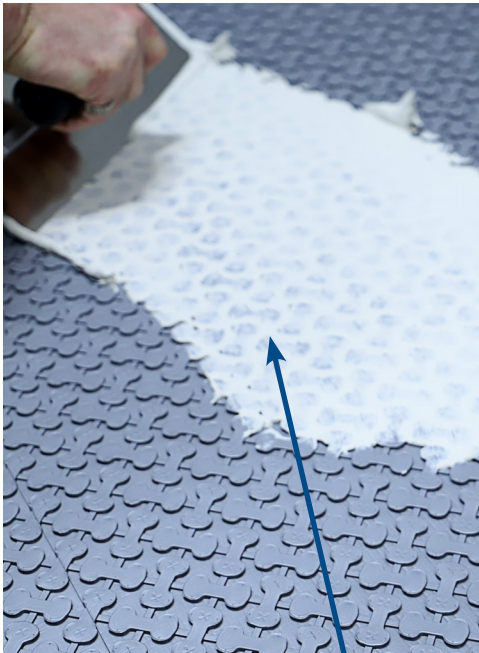
- High Flexibility
- Maximum shear bond strength

Innovative, Thoughtful Design for Maximum Protection, Efficiency and Performance



High-traffic and heavy load bearing uncoupling ideal for large and super format tile

- Approved for use with large format tile & gauged porcelain panels
- Robinson Floor Test: Extra heavy commercial and residential rating
- Perfect for commercial high-stress areas to residential installations
- Can be used as a topside waterproofing membrane
- Highest shear and tensile bond strengths
- Thick, well-bonded underside double welded felt for improved bond
- Vapor ventilation compensation channels
- Minimal roll memory



Pre-fill in just ONE PASS!



ARDEX Liquid Backerboard®

Self-Leveling Underlayment

- For an even FASTER pre-fill



ARDEX UI 740™ FLEXBONE® Uncoupling Membrane is a high load-bearing uncoupling membrane ideal for large format tile in high-traffic areas. The system helps neutralize underlying substrate movement and supports and distributes heavy loads from above. Special high-performance, double-welded felt provides a stronger bond. ARDEX UI 740™ FLEXBONE® can be used as a waterproof layer in bathrooms and wet areas.

ARDEX FLEXBONE®

Uncoupling and In-Floor Heating Systems



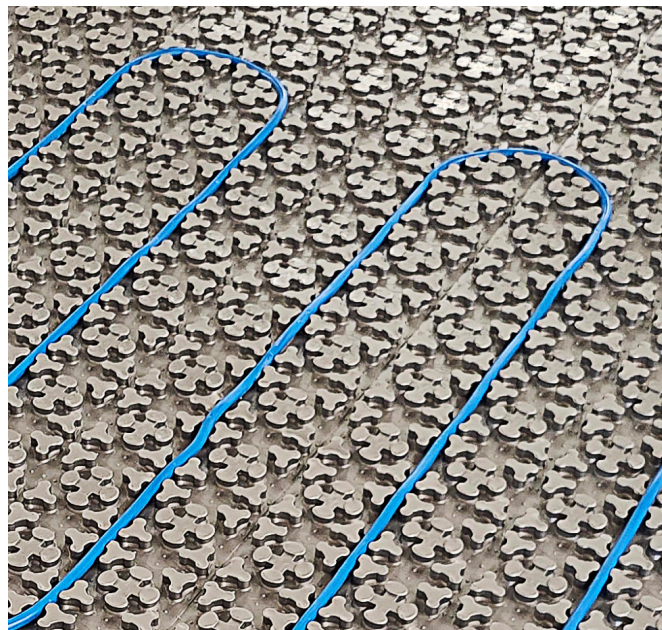
ARDEX takes innovation and quality to a new level with the comprehensive ARDEX FLEXBONE® Systems. ARDEX has you covered with a full range of installation products and components from substrate preparation through high-performance grouts and everything in between for a single-source, complete system backed by the ARDEX SystemOne™ Warranty Program.

25 YEAR - ARDEX UI 740™ FLEXBONE®
Uncoupling Membrane

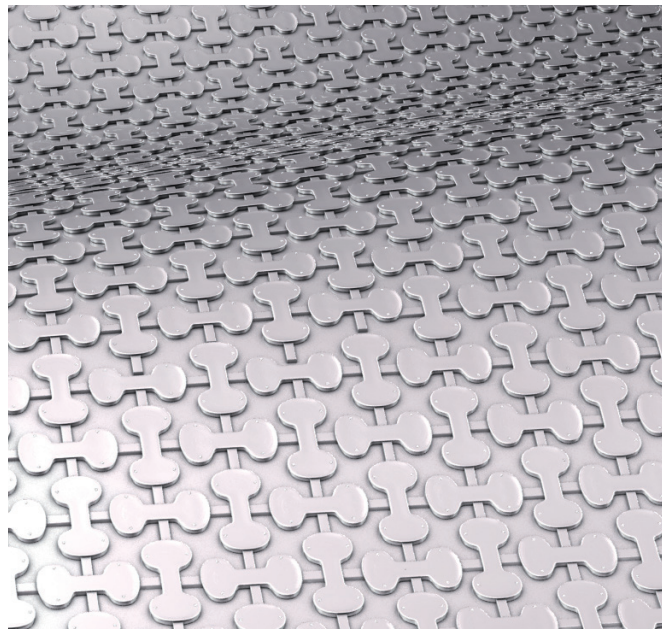
ARDEX FLEXBONE® HEAT

10-YEAR SYSTEM WARRANTY

- Complete System including membrane, cables, mortars, grouts, and more.
- ARDEX FLEXBONE HEAT® Thermostats
3-Year Product Warranty



ARDEX FLEXBONE® HEAT



ARDEX UI 740™ FLEXBONE®

AB 219 07/2025

www.ardexamericas.com

