



# ARDEX SYSTEM SOLUTIONS

*Product Guide*

[www.ardexamericas.com](http://www.ardexamericas.com) • [www.wwhenry.com](http://www.wwhenry.com)



**HENRY**

BUILT BY  
**YOU**  
backed by **ARDEX**



**LEADING PLAYER**  
 IN WORLD MARKETS  
 HIGH-PERFORMANCE  
 SPECIALTY BUILDING  
**PRODUCTS**  
 FAMILY-OWNED  
**BUSINESS**



ARDEX Production Facility  
 Stockton, CA

**VISION**

The ARDEX Group is the leading solution and service provider of innovative building systems.

**PERFORMANCE**

ARDEX delivers time-tested solutions for the most complex installation problems. We strive for market leadership in defined markets worldwide. ARDEX Americas, serving the US, Canada and Latin America, stands for German Engineering made in North America.

**SYSTEM SOLUTIONS**

As an experienced industry partner, we are committed to providing the highest quality materials designed with the installer in mind. We derive our inspiration from you, our customers.

**71**  
 SUBSIDIARIES

**3,900**  
 EMPLOYEES

**50+**  
 COUNTRIES

**18+**  
 MAJOR BRANDS



**ARDEX AMERICAS**  
 HEADQUARTERS  
 Aliquippa, Pennsylvania, USA



**ARDEX GROUP**  
 HEADQUARTERS  
 Witten, Germany



# TABLE OF CONTENTS



**SELF-LEVELING  
UNDERLAYMENTS**



**MOISTURE CONTROL  
& PRIMERS**



**PATCHING  
COMPOUNDS**



**FINISHED  
SURFACES**



**FLOORING  
ADHESIVES**



**TILE & STONE  
INSTALLATION SYSTEMS**



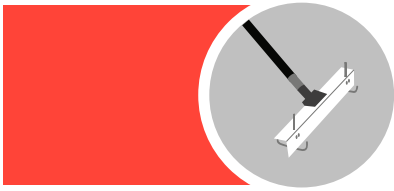
**ENGINEERED CONCRETE  
REPAIR SYSTEMS**



**ARDEX CONCRETE  
MANAGEMENT SYSTEMS™**



**ARDIFLO™  
PUMPING SYSTEMS**



# SELF-LEVELING UNDERLAYMENTS

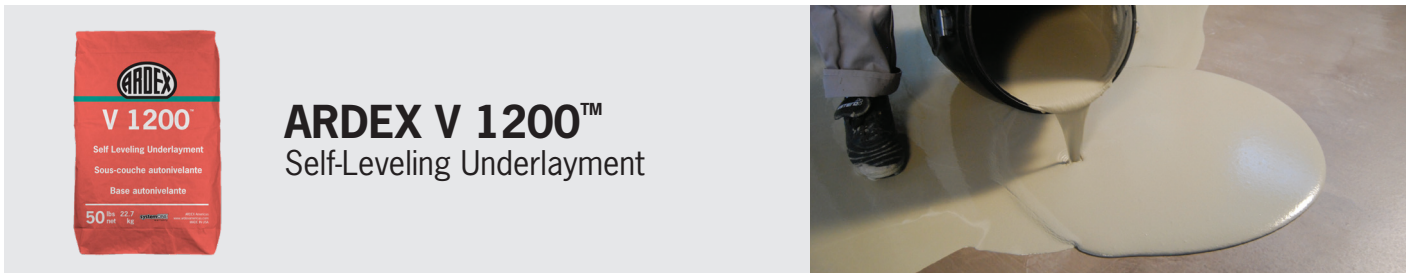


**ARDEX V 1300™**  
Self-Leveling Underlayement  
Sous-couche autonivelante  
Base autonivelante

**ARDEX V 1300™**  
High Flow Self-Leveling Underlayement

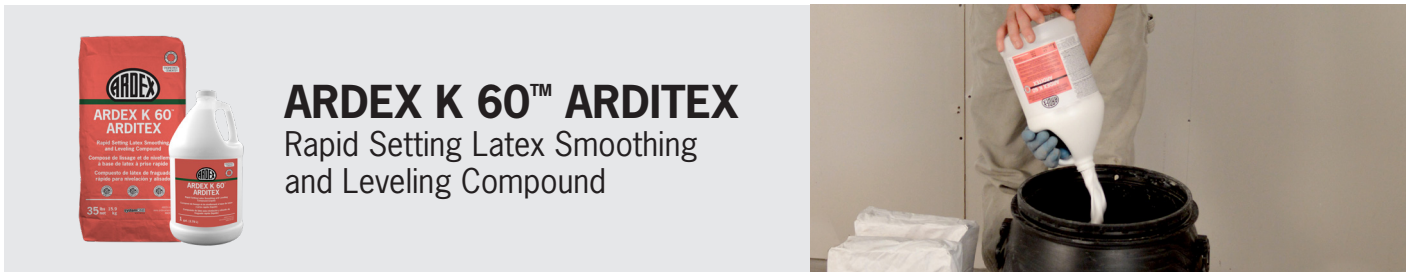
50 lbs 22.7 kg net

ARDEX Americas pioneered self-leveling underlayments in the US marketplace in 1978, and revolutionized the industry. Today our self-levelers are the industry benchmark for contractors, architects, and installers.



**ARDEX V 1200™**  
Self Leveling Underlayement  
Sous-couche autonivelante  
Base autonivelante

**ARDEX V 1200™**  
Self-Leveling Underlayement



**ARDEX K 60™ ARDITEX**  
Rapid Setting Latex Smoothing and Leveling Compound

**ARDEX K 60™ ARDITEX**  
Rapid Setting Latex Smoothing and Leveling Compound

## MORE SELF-LEVELING UNDERLAYMENTS:

**ARDEX K 15®**  
**ARDEX K 13™**

**ARDEX K 10™**  
**ARDEX V 1000™**

**ARDEX K 22 F™**  
**ARDEX K 34™**

# MOISTURE CONTROL & PRIMERS

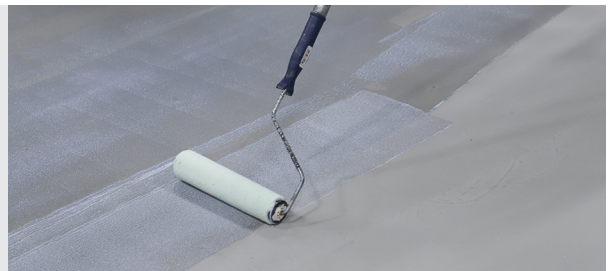


**ARDEX MC™ RAPID**  
One-Coat Moisture Control System for Concrete to Receive ARDEX Products

ARDEX Americas delivers one and two-coat moisture control systems to address problematic moisture vapor emissions in concrete. Our moisture control systems are easy-to-apply, provide superior coverage, and are backed by industry-leading warranties.



**ARDEX VB 100™**  
Fast-Track, One-Component Moisture Vapor Retarder



## PRIMERS:



**ARDEX P 4™**  
Premixed, Rapid-Drying, Multipurpose Primer



## MORE PRIMERS:

**ARDEX P 82™**

**ARDEX P 51™**

**ARDEX EP 2000™**




# PATCHING COMPOUNDS







**ARDEX FEATHER FINISH®**  
Self-Drying, Cement-Based  
Finish Underlayment


With the launch of ARDEX FEATHER FINISH® nearly 30 years ago, ARDEX was established as the leading provider of high-quality patching compounds. Count on our patches to eliminate flooring installation problems associated with disbonding, crumbling, mold, mildew and staining.



**ARDEX MRF™**  
Moisture-Resistant, Rapid-Drying,  
Skimcoat Patching Underlayment

**ARDEX SKM™**  
Skimcoat Patch &  
Finishing Underlayment



## MORE PATCHING COMPOUNDS:

ARDEX **SD-P®**

ARDEX **FORTI FINISH™**

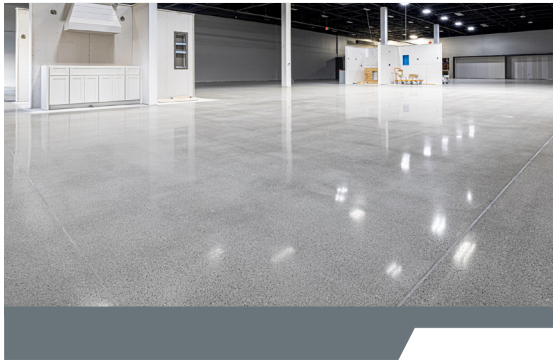
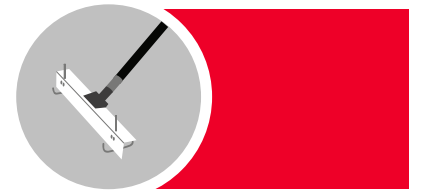
ARDEX **GPS™**

ARDEX **SD-P® LT**

ARDEX **FEATHER FINISH® XF™**



# FINISHED SURFACES



**ARDEX K 525™**  
Self-Leveling Concrete Topping  
with Dark Aggregate Surface

Green benefits and lower life cycle costs are just a few reasons why the industry is trending toward concrete finished surfaces. Suitable for both commercial and residential applications, ARDEX provides high-performing products that allow for a wide array of finished surfaces.



**ARDEX SD-M™**  
Designer Floor Finish™



**ARDEX PC-T™**  
Polished Concrete Topping



## MORE FINISHED SURFACES:

- ARDEX K 520™
- ARDEX K 530™
- ARDEX SD-T®
- ARDEX K 521™
- ARDEX K 301™
- ARDEX K 523™

# panDOMO®

A modern system for concrete surface designs that keeps all architectural possibilities open.  
[www.ardex-pandomo.com](http://www.ardex-pandomo.com)



# FLOORING ADHESIVES



**HENRY® Gription**  
Universal Vinyl Flooring Adhesive

HENRY®, a brand of ARDEX Americas, is one of the world’s leading manufacturers of adhesives for all types of flooring installation. HENRY® offers innovative products designed for today’s flooring installation professional with performance backed by unmatched technical service and the ARDEX SystemOne™ Flooring Warranty. Our adhesives additionally lead the way with environmental certifications independently issued by the RFCI FloorScore® testing program.



**HENRY® 647 PlumPro™**  
Fast-Track, Roll-Apply Adhesive



**HENRY® 650 R**  
Releasable Bond Pressure Sensitive Adhesive



**HENRY® 430 ClearPro™**  
Clear VCT Floor Adhesive





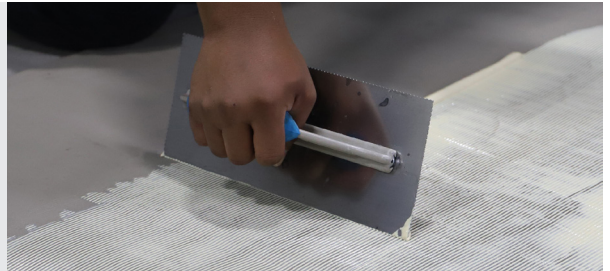
**HENRY® 1171N SureLock™**  
Acrylic Urethane Wood  
Flooring Adhesive



**HENRY® 351 FastPro™**  
Fast Grab, Pro Grade  
Carpet Adhesive



**HENRY® 695**  
High RH Vinyl Flooring Adhesive



## MORE FLOORING ADHESIVES:

HENRY® **2575** Floor & Wall MS-based Adhesive

HENRY® **440** Cove Base

HENRY® **256** Dual Purpose Carpet and Sheet Flooring Adhesive

For more information please visit [www.ardexamericas.com](http://www.ardexamericas.com).



**systemONE™**  
warranty

A complete flooring installation solution for ARDEX and HENRY backed by the most comprehensive full replacement warranty in the industry. For more information, visit [www.systemonesolutions.com](http://www.systemonesolutions.com)



# TILE & STONE INSTALLATION SYSTEMS



## ARDEX X 77™

MICROTEC® Fiber Reinforced  
Tile and Stone Mortar

ARDEX is the industry innovation leader offering a comprehensive line-up of German engineered, high-performance tile and stone installation systems formulated specifically with the installer in mind. For over 60 years, installers have relied on the tangible job site benefits to minimize the time, cost and risk of an installation.



## ARDEX UI 740™ FLEXBONE® Uncoupling Membrane



## ARDEX FL™ Rapid Set, Flexible, Sanded Grout

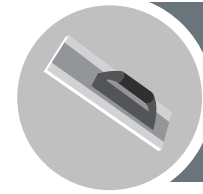


### MORE TILE & STONE INSTALLATION PRODUCTS:

ARDEX **Exterior Tile & Stone Systems**  
ARDEX **TLT™ Shower Systems**  
ARDEX **DG 1™**

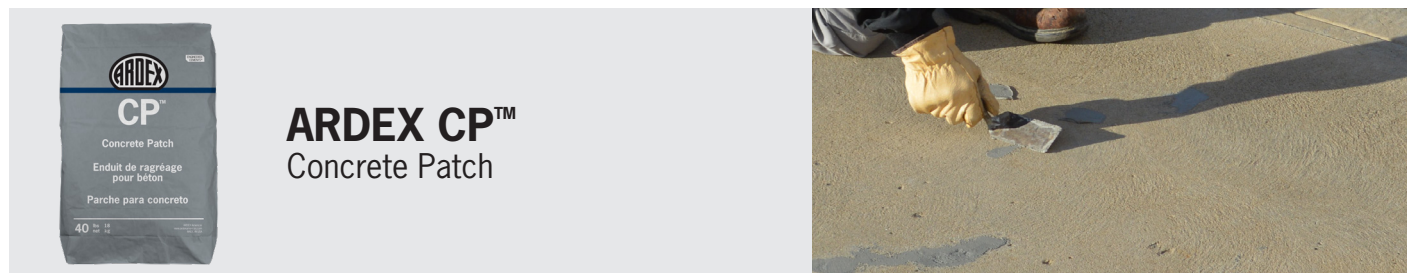
ARDEX **X 5™**  
ARDEX **S 1-K™**  
ARDEX DTA **Quality Tools**

# ENGINEERED CONCRETE REPAIR SYSTEMS (ECRS)

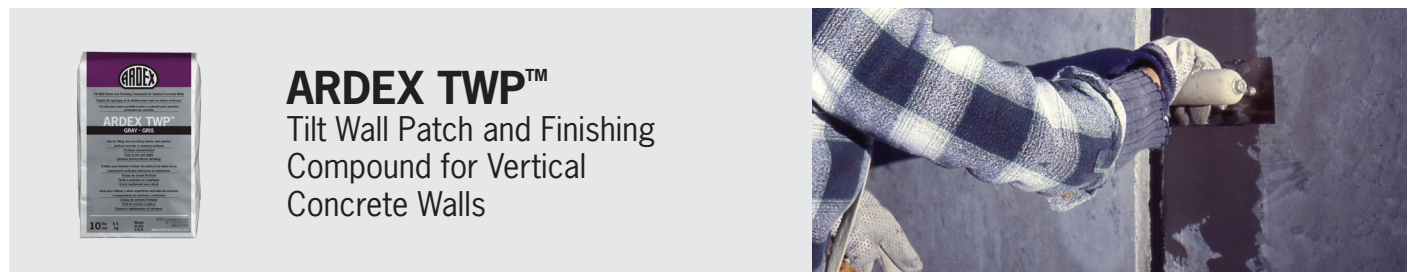


**ARDEX CD™**  
Concrete Dressing

ECRS is a complete product line for structural and non-structural repairs; exterior wear surface repair and restoration; horizontal, vertical and overhead repairs; crack repair and joint sealing. ECRS products provide comprehensive restoration capabilities for almost every application.



**ARDEX CP™**  
Concrete Patch



**ARDEX TWP™**  
Tilt Wall Patch and Finishing  
Compound for Vertical  
Concrete Walls

## MORE ENGINEERED CONCRETE REPAIR SYSTEMS:

**ARDEX B 24™**

**ARDEX CG™**

**ARDEX BACA™**

**ARDEX B 40™**

**ARDEX OVP™**

**ARDEX B 20™**

# ARDEX CONCRETE MANAGEMENT SYSTEMS™

ARDEX Concrete Management Systems™ (ACMS) is a patented (US Patent 8,857,130 B1), specified finishing method for new concrete construction that addresses challenges like moisture, flatness and levelness. It is comprised of seven steps, and includes an integrated system of moisture control and self-leveling underlayment products. ACMS resolves issues that arise during construction due to the disparity between Division 3 (concrete) and Division 9 (finishes). It can narrow the slab cure window to just a few days.

The ACMS rough screed process option can be combined with ARDIFLO™ pumping systems, allowing you to meet the most demanding flatness and levelness tolerances for flooring and other interior trades.



# ARDIFLO™ PUMPING SYSTEMS

ARDEX' ARDIFLO™ Pumping Systems provide floor leveling solutions to increase efficiency and productivity on your next installation. Our standard, medium, and high-capacity pumping systems are available with a broad range of training and support systems, tailored warranties and contractor programs. Find out which of our innovative pump systems is right for you.



## ARDIFLO™ PUMPING SYSTEMS:

**POWERFLO®**  
**ROVER®**

**MID-CAPACITY PUMP**  
**ARDEX HC 100™**

**AMP® 200**

For more information please visit [www.ardexardiflo.com](http://www.ardexardiflo.com)



## TECHNICAL FOUNDATION

ARDEX Americas technical training programs and seminars have been recognized as the best in the industry. For over 40 years, our trainings provide classroom and hands-on learning where attendees work directly with ARDEX high-performance products. They learn the newest installation techniques allowing them to return to the job site with the latest knowledge and skills necessary to increase job efficiency and help ensure installation success.

## TRAINING EXPERTISE

Count on our expert team to provide you with the ins and outs of installing our products to industry standards. Whether you are an installer, an architect or a distributor, you will always benefit from seminars tailored to your needs. In addition, we provide you with documentation and learning materials, as well as free catering and lodging during your stay.



# REGISTER NOW!

Check with your local ARDEX Americas Sales Professional or visit [www.ardexamericas.com](http://www.ardexamericas.com) to sign up for one of the ARDEX Technical Training programs. Training seminars are available throughout the US and Canada.

### **PROUD TRAINING PARTNER OF:**

*FCICA, TCNA, ASCC, INSTALL, NAFCT, TTMAC, CTEF, NTCA, NICFI, AND ICRI*

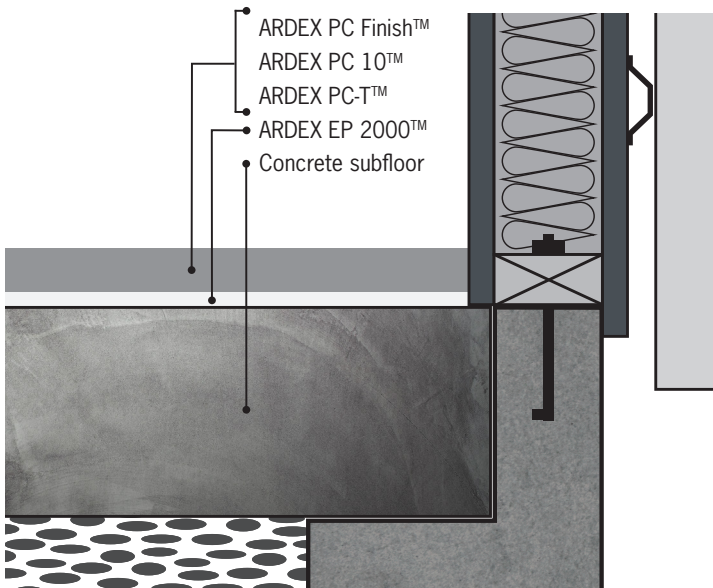
# ARCHITECTURAL & ENGINEERING

ARDEX and our dedicated staff of Architectural Specialists offer solutions to directly support specification needs through specification writing assistance, proper product placement and confirmation of technical requirements. Other services include:

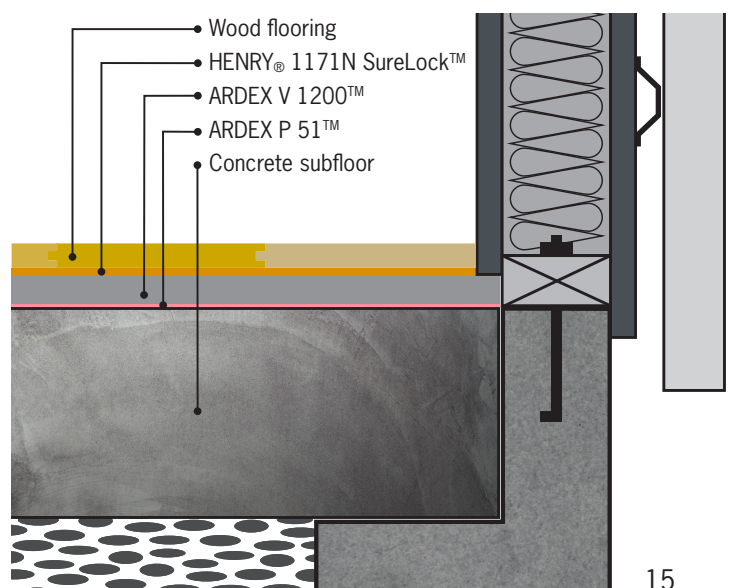
- Downloadable CSI-formatted specifications
- Products assembly CAD drawings
- LEED® qualifications through USGBC
- Support through MasterSpec® and BSD speclink-e®
- AIA continuing education
- BIM (Building Information Modeling) through BIMObject



## Polished Topping Sample System



## Wood Floor Sample System





Connect with ARDEX online! Read articles about industry trends, featured installations (like the one pictured) and connect with other ARDEX enthusiasts. You'll stay up-to-date on our upcoming events, like trade shows, demo days, and even educational webinars!




 **ARDEX Americas**  
400 Ardex Park Drive  
Aliquippa, PA 15001

 **ARDEX Canada**  
#163 Buttermill Ave. Unit #8  
Concord, ON L4K 3X87


 **ARDEX Latin America**  
400 Ardex Park Drive  
Aliquippa, PA 15001


 p: 724-203-5000

 p: 905-673-2739

 +52 (81) 1155-8167

 [www.ardexamericas.com](http://www.ardexamericas.com)  
[info@ardexamericas.com](mailto:info@ardexamericas.com)

 [www.ardex.ca](http://www.ardex.ca)  
[info@ardexamericas.com](mailto:info@ardexamericas.com)

 [www.ardexamericas.com](http://www.ardexamericas.com)  
[contacto@ardexamericas.com](mailto:contacto@ardexamericas.com)



**HENRY**

BUILT BY  
**YOU**  
backed by **ARDEX**