

ARDEX FP™

Form & Pour

Concrete Repair Mortar

ARDEX FP™ Form & Pour is a Portland cement-based structural repair mortar for horizontal, vertical and overhead applications for above, on or below grade. The resulting patch has low shrinkage and resists delamination. Typical applications include balconies, plaza decks, columns, walls and parking decks.

Key Features

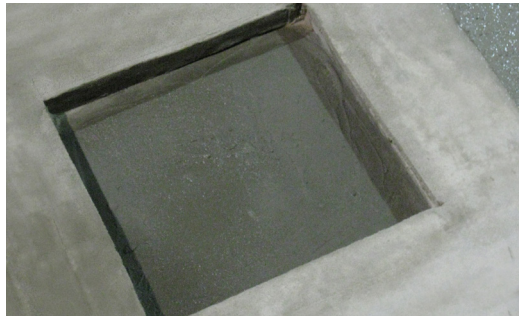
- Mix with water only
- Easy to apply – formable, pourable and pumpable
- For exterior and interior concrete
- Suitable for commercial, institutional and multi-unit residential applications

Installation

- **Packaging:** 50 lb bag 22,6 kg
- **Coverage:** 9.6 sq. ft. at 1/2" (0.890 m² at 12.7 mm)
- **Thickness:**
 - Neat: from 1/2" to 4" (12 mm to 10 cm)
 - Aggregate: Up to 8" (20 cm) when extended
- **Pot life:** 20 to 40 minutes
- **Coat or seal:** 72 hours

Performance

- **ASTM C109 mod (air cure only) Compressive Strength:**
 - 2,200 psi at 24 hours
 - 5,500 psi at 28 days
- **ASTM C293 Flexural Strength:**
 - 900 psi at 7 days
 - 1,050 psi at 28 days



ENGINEERED CONCRETE
REPAIR SYSTEMS



AMERICAS

+1-724-203-5000
888-512-7339

www.ardexamericas.com