



# ARDEX SYSTEM SOLUTIONS

*Product Guide*

[www.ardexamericas.com](http://www.ardexamericas.com) • [www.wwhenry.com](http://www.wwhenry.com)



**HENRY**

CHOOSE  
**YOUR**  
SOLUTION

**LEADING PLAYER**  
IN WORLD MARKETS

HIGH-PERFORMANCE  
SPECIALTY BUILDING  
**PRODUCTS**

FAMILY-OWNED  
**BUSINESS**



ARDEX Production Facility  
Stockton, CA

## VISION

Our vision of the ARDEX Group is to be one of the world's leading solution providers of high-performance specialty building materials.

## PERFORMANCE

ARDEX delivers time-tested solutions for the most complex installation problems. We strive for market leadership in defined markets worldwide. ARDEX Americas, serving the US, Canada and Latin America, stands for German Engineering made in North America.

## SYSTEM SOLUTIONS

As an experienced industry partner, we are committed to providing the highest quality materials designed with the installer in mind. We derive our inspiration from you, our customers.

**49**  
SUBSIDIARIES

**2,700**  
EMPLOYEES

**50+**  
COUNTRIES

**14+**  
MAJOR BRANDS



**ARDEX AMERICAS**  
HEADQUARTERS

*Aliquippa, Pennsylvania, USA*



**ARDEX GROUP**  
HEADQUARTERS

*Witten, Germany*



# TABLE OF CONTENTS



**SELF-LEVELING  
UNDERLAYMENTS**



**MOISTURE  
CONTROL**



**PATCHING  
COMPOUNDS**



**FINISHED  
SURFACES**



**FLOORING  
ADHESIVES**



**TILE & STONE  
INSTALLATION SYSTEMS**



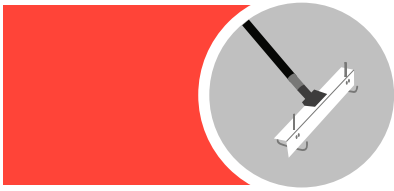
**ENGINEERED CONCRETE  
REPAIR SYSTEMS**



**ARDEX CONCRETE  
MANAGEMENT SYSTEMS™**



**ARDIFLO™  
PUMPING SYSTEMS**



# SELF-LEVELING UNDERLAYMENTS




**CHOOSE THE WORKHORSE**  
**ARDEX V 1200™**  
Self-Leveling Underlayment

ARDEX Americas pioneered self-leveling underlayments in the US marketplace in 1978, and revolutionized the industry. Today our self-levelers are the industry benchmark for contractors, architects, and installers.



**CHOOSE REACTIVATABLE**  
**ARDEX K 10™**  
Reactivatable™, High-Flow,  
Self-Leveling Underlayment




Reactivatable with an ARDEX  
T-6 Spiked Roller for up to  
**25 MINUTES!**



**CHOOSE VERSATILE, NO WATER**  
**ARDEX K 60™ ARDITEX**  
Rapid Setting Latex Smoothing  
and Leveling Compound



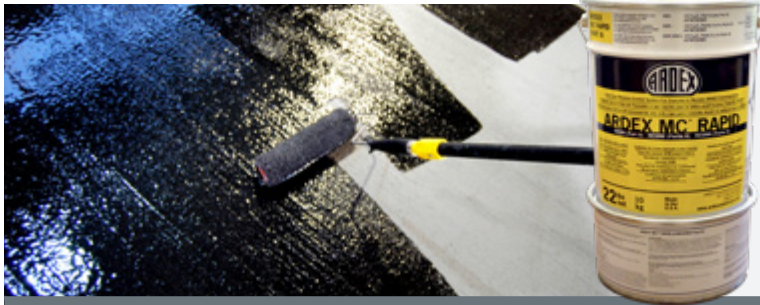
## MORE SELF-LEVELING UNDERLAYMENTS:

**ARDEX K 15®**  
**ARDEX K 13™**

**ARDEX V 1000™**  
**ARDEX GS-4™**

**ARDEX K 22 F™**  
**ARDEX LU 100™**

# MOISTURE CONTROL



CHOOSE ULTIMATE 1 COAT  
**ARDEX MC™ RAPID**  
One-Coat Moisture Control  
System for Concrete to  
Receive ARDEX Products

ARDEX Americas delivers one- and two-coat moisture control systems to address problematic moisture vapor emissions in concrete. Our moisture control systems are easy-to-apply, provide superior coverage, and are backed by industry-leading warranties.



CHOOSE READY TO USE  
**ARDEX VR 98™**  
Fast-Track, One-Component  
Moisture Vapor Retarder



## PRIMERS:



CHOOSE POROUS SURFACES  
**ARDEX P 51™**  
Primer



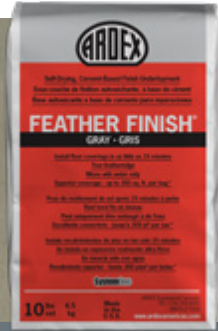
## MORE PRIMERS:

**ARDEX P 82™**

**ARDEX EP 2000™**



# PATCHING COMPOUNDS



CHOOSE UNRIVALED PERFORMANCE  
**ARDEX FEATHER FINISH®**  
Self-Drying, Cement-Based  
Finish Underlayment

With the launch of ARDEX FEATHER FINISH® nearly 30 years ago, ARDEX was established as the leading provider of high-quality patching compounds. Count on our patches to eliminate flooring installation problems associated with disbonding, crumbling, mold, mildew and staining.



CHOOSE WEATHERPROOF  
**ARDEX MRF™**  
Moisture-Resistant, Rapid-Drying,  
Skimcoat Patching Underlayment



CHOOSE SKIM COAT  
**ARDEX SKM™**  
Skimcoat Patch &  
Finishing Underlayment



## MORE PATCHING COMPOUNDS:

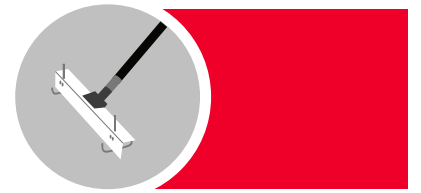
ARDEX **SD-P®**

ARDEX **FORTI FINISH™**

ARDEX **GPS™**



# FINISHED SURFACES



CHOOSE WEAR SURFACE TOPPING

## ARDEX SD-T®

Self-Drying, Self-Leveling  
Concrete Topping

Green benefits and lower life cycle costs are just a few reasons why the industry is trending toward concrete finished surfaces. Suitable for both commercial and residential applications, ARDEX provides high-performing products that allow for a wide array of finished surfaces.



CHOOSE TROWELED TOPPING

## ARDEX SD-M™

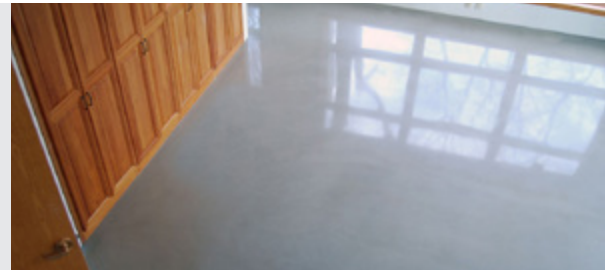
Designer Floor Finish™



CHOOSE POLISHED TOPPING

## ARDEX PC-T™

Polished Concrete Topping



### MORE FINISHED SURFACES:

ARDEX K 520™

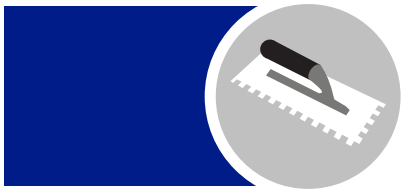
ARDEX K 301™

ARDEX K 521™

## panDOMO®

A modern system for concrete surface designs that keeps all architectural possibilities open.

[www.ardex-pandomo.com](http://www.ardex-pandomo.com)



## FLOORING ADHESIVES

# HENRY®



CHOOSE HIGH RH

**HENRY® 695**

High RH Vinyl Flooring Adhesive

The W.W. HENRY® Company, a division of ARDEX Americas, is one of the world's largest manufacturers of adhesives for all types of flooring installations. HENRY® focuses on producing GreenLine™ adhesives, which reduce the environmental impact associated with flooring adhesives. HENRY® products are backed by unmatched customer service, expert technical support and a comprehensive warranty program.



CHOOSE FAST-TRACK

**HENRY® 647 PlumPro™**

Fast-Track, Roll-ApPLY Adhesive



CHOOSE RELEASABLE

**HENRY® 650 R**

Releasable Bond Pressure Sensitive Adhesive



### MORE FLOORING ADHESIVES:

HENRY® **640 VinylLock™**

HENRY® **314 ReadySet™**

HENRY® **622 VinylBond™**

HENRY® **422 Fortify**

HENRY® **440**

HENRY® **356C MultiPro™**

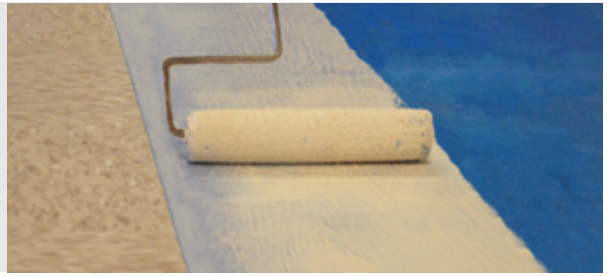




CHOOSE LONGER WORKING TIME

## HENRY® 430 ClearPro™

Clear VCT Floor Adhesive



CHOOSE EASE OF INSTALLATION

## HENRY® 1171N SureLock™

Acrylic Urethane Wood Flooring Adhesive



CHOOSE FAST GRAB

## HENRY® 351 FastPro™

Fast Grab, Pro Grade Carpet Adhesive



CHOOSE RELEASABLE

## HENRY® 630 PeachPro™

Pressure Sensitive Flooring Adhesive



**systemONE**

A complete flooring installation solution for ARDEX and HENRY backed by the most comprehensive full replacement warranty in the industry. For more information, visit [www.systemonesolutions.com](http://www.systemonesolutions.com)



# TILE & STONE INSTALLATION SYSTEMS



**CHOOSE** OUTSTANDING BOND  
STRENGTH AND SAG RESISTANCE

## **ARDEX X 77™**

MICROTEC® Fiber Reinforced  
Tile and Stone Mortar

ARDEX' comprehensive line of tile & stone installation products are German-engineered and reduce the time, cost and risk of tile installations. As a leader in grout and mortar technologies, ARDEX' products are innovative solutions for every type of tile installation.



**CHOOSE** HIGH STRENGTH  
AND FASTER PREFILL

## **ARDEX UI 740™ FLEXBONE®**

Uncoupling Membrane



**CHOOSE** HIGHLY VERSATILE,  
RAPID SETTING

## **ARDEX FL™**

Rapid Set, Flexible, Sanded Grout



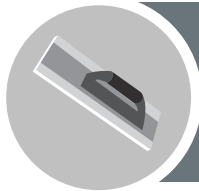
**CHOOSE** RAPID SETTING  
WATERPROOFING

## **ARDEX 8+9™**

Rapid Waterproofing and  
Crack Isolation Compound



# ENGINEERED CONCRETE REPAIR SYSTEMS (ECRS)



CHOOSE RESURFACING  
**ARDEX CD™**  
Concrete Dressing

ECRS is a complete product line for structural and non-structural repairs; exterior wear surface repair and restoration; horizontal, vertical and overhead repairs; crack repair and joint sealing. ECRS products provide comprehensive restoration capabilities for almost every application.



CHOOSE CONCRETE REPAIR  
**ARDEX CP™**  
Concrete Patch



CHOOSE VERTICAL FINISH  
**ARDEX TWP™**  
Tilt Wall Patch and Finishing Compound  
for Vertical Concrete Walls



## MORE ENGINEERED CONCRETE REPAIR SYSTEMS:

ARDEX **ERM™**  
ARDEX **TRM™**

ARDEX **CG™**  
ARDEX **OVP™**

ARDEX **BACA™**  
ARDEX **B 20™**

# ARDEX CONCRETE MANAGEMENT SYSTEMS™

ARDEX Concrete Management Systems™ (ACMS) is a patented (US Patent 8,857,130 B1), specified finishing method for new concrete construction that addresses challenges like moisture, flatness and levelness. It is comprised of seven steps, and includes an integrated system of moisture control and self-leveling underlayment products. ACMS resolves issues that arise during construction due to the disparity between Division 3 (concrete) and Division 9 (finishes). It can narrow the slab cure window to just a few days.

The ACMS rough screed process option can be combined with ARDIFLO™ pumping systems, allowing you to meet the most demanding flatness and levelness tolerances for flooring and other interior trades.



# ARDIFLO™ PUMPING SYSTEMS

ARDEX' ARDIFLO™ Pumping Systems provide floor leveling solutions to increase efficiency and productivity on your next installation. Our standard, medium, and high-capacity pumping systems are available with a broad range of training and support systems, tailored warranties and contractor programs. Find out which of our innovative pump systems is right for you.



## ARDIFLO™ PUMPING SYSTEMS:

**POWERFLO®**

**CUBE®**

**AMP® 200**

**ROVER®**

**ARDEX HC 100™**

**ARDEX HC 100R™**

For more information please visit [www.ardexardiflo.com](http://www.ardexardiflo.com)



## TECHNICAL FOUNDATION

ARDEX Americas technical training programs and seminars have been recognized as the best in the industry. For over 40 years, our trainings provide classroom and hands-on learning where attendees work directly with ARDEX high-performance products. They learn the newest installation techniques allowing them to return to the job site with the latest knowledge and skills necessary to increase job efficiency and help ensure installation success.

## TRAINING EXPERTISE

Count on our expert team to provide you with the ins and outs of installing our products to industry standards. Whether you are an installer, an architect or a distributor, you will always benefit from seminars tailored to your needs. In addition, we provide you with documentation and learning materials, as well as free catering and lodging during your stay.



# REGISTER NOW!

Check with your local ARDEX Americas Sales Professional or visit [www.ardexamericas.com](http://www.ardexamericas.com) to sign up for one of the ARDEX Technical Training programs. Training seminars are available throughout the US and Canada.

## PROUD TRAINING PARTNER OF:



# ARCHITECTURAL & ENGINEERING

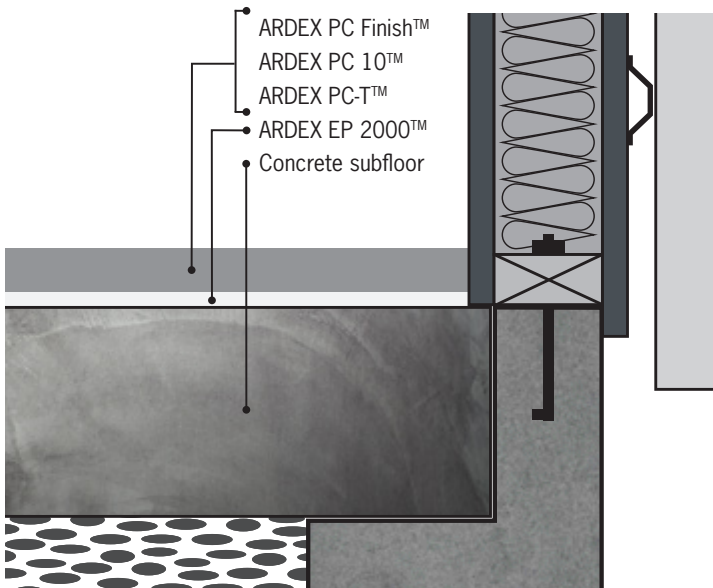


ARDEX and our dedicated staff of Architectural Specialists offer solutions to directly support specification needs through specification writing assistance, proper product placement and confirmation of technical requirements. Other services include:

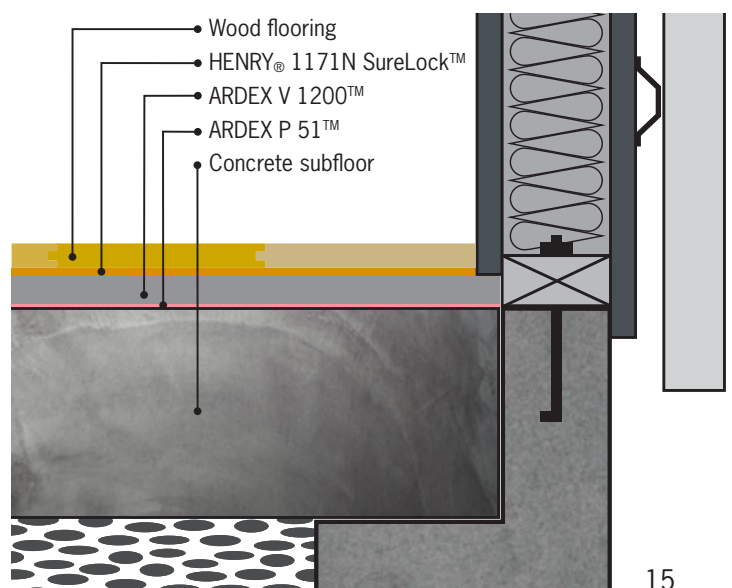
- Downloadable CSI-formatted specifications
- Products assembly CAD drawings
- LEED® qualifications through USGBC
- Support through MasterSpec® and BSD speclink-e®
- AIA continuing education
- BIM (Building Information Modeling) through BIMObject



## Polished Topping Sample System



## Wood Floor Sample System





Connect with ARDEX online! Read articles about industry trends, featured installations (like the one pictured) and connect with other ARDEX enthusiasts. You'll stay up-to-date on our upcoming events, like trade shows, demo days, and even educational webinars!



**ARDEX Americas**  
400 Ardex Park Drive  
Aliquippa, PA 15001



**ARDEX Canada**  
2400 Lucknow Drive Unit 33  
Mississauga, Ontario L5S 1T9



**ARDEX Latin America**  
400 Ardex Park Drive  
Aliquippa, PA 15001



p: 724-203-5000



p: 905-673-2739



+52 (81) 1155-8167



[www.ardexamericas.com](http://www.ardexamericas.com)  
[info@ardexamericas.com](mailto:info@ardexamericas.com)



[www.ardex.ca](http://www.ardex.ca)  
[info@ardexamericas.com](mailto:info@ardexamericas.com)



[www.ardexamericas.com](http://www.ardexamericas.com)  
[contacto@ardexamericas.com](mailto:contacto@ardexamericas.com)

