

ARDEX VENEER

STONE INSTALLATION SYSTEMS

- Outstanding Sag Resistance
- Fast-track installations
- Superior Bond Strength
- Water and Frost Resistant



The ARDEX Difference

Stone veneer (also known as manufactured stone, natural stone veneer) is among the fastest growing decorative building products options on the market. The aesthetics and variety of these products have improved significantly providing an attractive finished look that is hard to differentiate from authentic natural stone at a lower cost.

Despite the many benefits, the increased popularity of veneer stone systems has led to an influx of less experienced installers and the use of low quality materials that are inconsistent or not properly formulated for these products. The results include delamination, water problems and failures that lead to costly repairs.

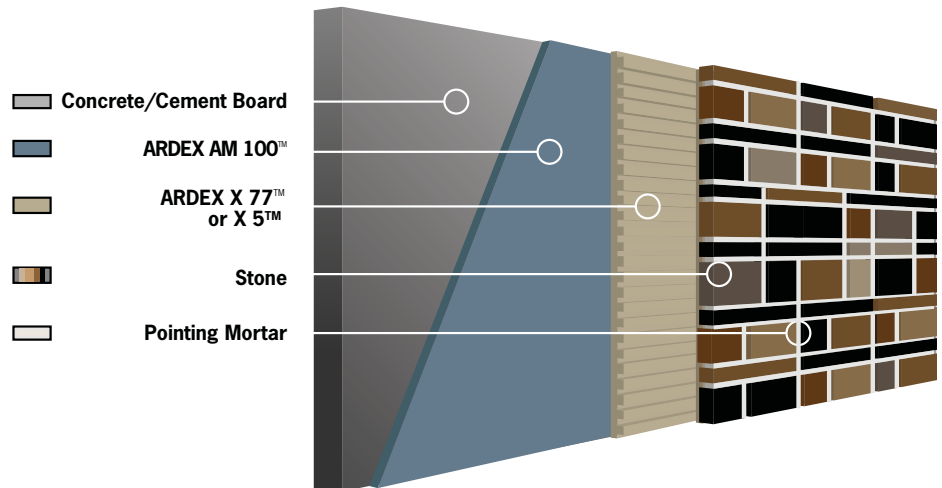
ARDEX Veneer Stone Installation Systems offer a complete line of easy to use high-performance products including mortars, wall smoothing compounds and waterproofing, all backed by the comprehensive ARDEX SystemOne™ Warranty for ultimate peace of mind! ARDEX also offers extensive training with an expert team of technical specialists throughout North and Central America available for installation support, specification assistance and jobsite visits.



Installation Methods

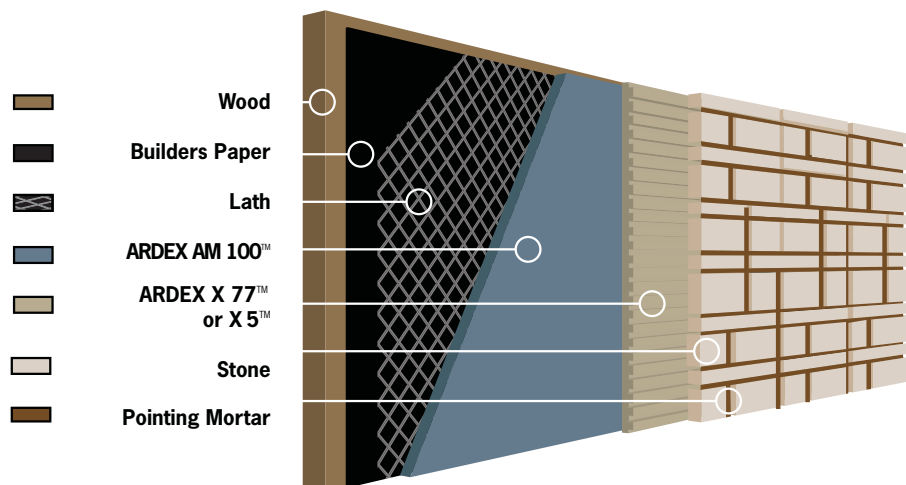
Interior Installation Over Concrete, Masonry or Cement Board Substrates

1. For concrete or masonry substrates that are rough or require repairing, smooth the substrate with ARDEX AM 100™ Rapid Set Smoothing and Ramping Mortar to create a smooth optimal surface that can receive veneer stone in just two hours where most brown coats require a minimum of 24 hours.
2. Use ARDEX X 77™ MICROTEC® Fiber Reinforced Tile and Stone Mortar or ARDEX X 5™ Flexible Tile and Stone Mortar to install the veneer stone.
3. Grout with an appropriate pointing mortar.



Interior Installations Over Framed or Wood Substrates

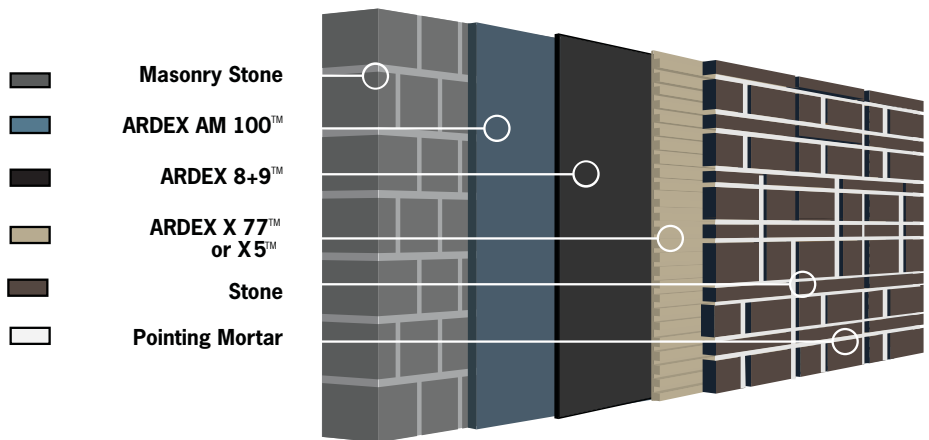
1. Fasten builders paper (tar paper), Grade D paper or similar to the substrate (typically two layers) and then attach metal lath that complies with ASTM 1063.
2. Smooth over the lath with ARDEX AM 100™ Rapid Set Smoothing and Ramping Mortar to create a smooth surface. The veneer stone can be installed in just two hours where most brown coats require a minimum of 24 hours.
3. Use ARDEX X 77™ MICROTEC® Fiber Reinforced Tile and Stone Mortar or ARDEX X 5™ Flexible Tile and Stone Mortar to install the veneer stone.
4. Grout with an appropriate pointing mortar.



For interior installations using cement board over wood framed substrates refer to concrete diagram above.

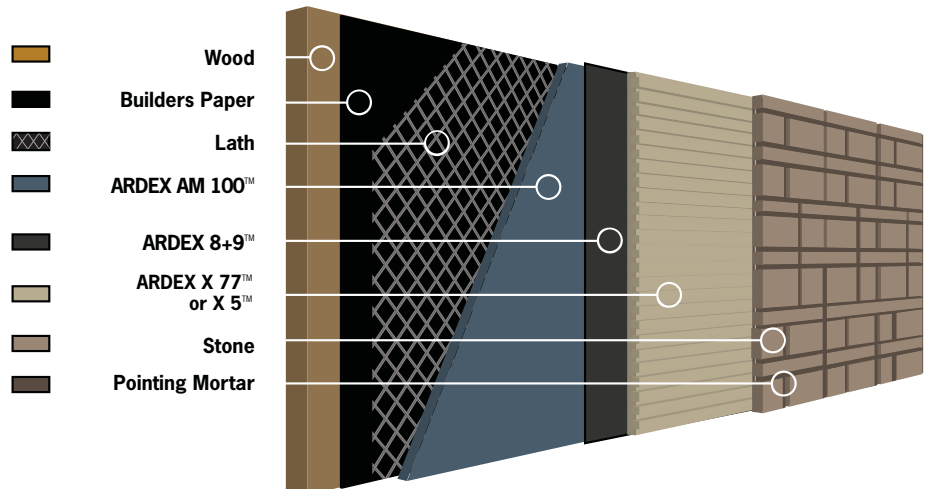
Exterior Installation Over Concrete, Masonry or Cement Board Substrates

1. For concrete or masonry substrates that are rough or require repairing, smooth the substrate with ARDEX AM 100™ Rapid Set Smoothing and Ramping Mortar to create a smooth optimal surface to receive ARDEX 8+9™ Rapid Waterproofing and Crack Isolation compound. ARDEX 8+9 can be installed in just two hours where most brown coats require a minimum of 24 hours to cure.
2. Apply ARDEX 8+9™ Rapid Waterproofing and Crack Isolation Compound over the ARDEX AM 100™ Rapid Set Smoothing and Ramping Mortar or directly to the concrete, masonry or cement board substrate to provide topside protection from water intrusion.
3. Use ARDEX X 77™ MICROTEC® Fiber Reinforced Tile and Stone Mortar or ARDEX X 5™ Flexible Tile and Stone Mortar to install the veneer stone.
4. Grout with an appropriate pointing mortar.



Exterior Installations Over Framed Wood or Other Substrates

1. Fasten builders paper (tar paper), Grade D paper or similar to the substrate (typically two layers) and then attach metal lath that complies with ASTM 1063.
2. Smooth over the lath with ARDEX AM 100™ Rapid Set Smoothing and Ramping Mortar to create a smooth optimal surface to receive ARDEX 8+9™ Rapid Waterproofing. ARDEX 8+9 can be installed in just two hours where most brown coats require 24 hours to cure.
3. Apply ARDEX 8+9™ Rapid Waterproofing and Crack Isolation Compound over the ARDEX AM 100 to provide topside protection from water intrusion.
4. Use ARDEX X 77™ MICROTEC® Fiber Reinforced Tile and Stone Mortar or ARDEX X 5™ Flexible Tile and Stone Mortar to install the veneer stone.
5. Grout with an appropriate pointing mortar.



ARDEX tile & stone
Installation Systems



ARDEX VENEER

STONE INSTALLATION SYSTEMS

ARDEX X 77™ MICROTEC®

Fiber Reinforced Tile and Stone Mortar

For all types of veneer stone systems when failure is not an option.

- Ideal for top down applications.
- True 60 minute open time; double ISO 13007 Standards
- Outstanding sag resistance; double ISO 13007 standards
- 3 hour pot life
- Water and frost resistant
- Excellent flexibility and strength



ARDEX X 5™

Flexible Tile and Stone Mortar

A highly flexible tile and stone mortar that is ideal for most types of veneer stone systems.

- Ideal for topdown applications
- 3 hour pot life
- 20 minute adjustment time
- Excellent sag resistance
- Very flexible
- Easy to use and apply



ARDEX 8+9™

Rapid Waterproofing and Crack Isolation Compound

Topside protection from water intrusion and the rusting of metal lath

- Rapid drying; set stone in just 90 minutes
- Allows for vapor transmission
- Cementitious; outstanding bonding
- Very easy to use
- Will not contribute to efflorescence
- Outstanding coverage; 80-100 sq. ft. (7.4-9 sq. m) per unit over ARDEX AM 100



ARDEX AM 100™

Rapid Set Smoothing and Ramping Mortar

Smooth concrete and masonry surfaces and for use as the brown coat layer over metal lath. Brown coat and tile in same day!

- Install over in just 2 hours
- Water and frost resistant
- Easy to use and apply
- Install up to 1 1/4" (3.2 cm)
- Only one coat required

Other outstanding ARDEX Products for Natural or Veneer Stone Installations

ARDEX X 32™ MICROTEC™

Fiber Reinforced Rapid Setting Thin to Thick Bed Mortar

- Install large and heavy natural stone and masonry products like treads, pattern, coping, nosings, caps, pavers, bluestone, limestone, granite and others.
- Incredible bonding power
- Not affected by moisture
- Can be installed thin (up to 1 1/4" thick) to thick accommodating stone variations
- Open to foot traffic in just 90 minutes

ARDEX SX™

100% Silicone Sealant for Tile and Stone Applications

- Use in joints and against flashing/edging
- Interior and exterior use
- No slag or slump
- Non-staining; non-yellowing
- Outstanding adhesion, permanently flexible
- UV, mold and mildew resistant
- Available in 35 ARDEX colors and clear



ARDEX CA 20 P™

Multi-Purpose Construction Adhesive and Sealant

- Use for minor interior and exterior stone repairs
- Install house numbers and building signage
- Paintable
- Shrinkage: < 1%

ARDEX SystemOne™ Warranty



With more than 60 years of global experience and innovation leadership, ARDEX Manufactured Stone Installation Systems are backed by the industry-best, comprehensive 10 Year SystemOne™ Warranty when using a specified system of ARDEX high performance installation products. The SystemOne Warranty is a full replacement warranty that includes product replacement, materials and labor providing ultimate peace of mind for installers and owners.

Please visit www.ardexamericas.com for complete SystemOne Warranty details.



AMERICAS

400 Ardex Park Drive
Aliquippa, PA 15001
888-512-7339
www.ardexamericas.com