



ARDEX Products Assembly

1. Grout Options:

- A. ARDEX WA™ High Performance, 100% Solids Epoxy Grout and Adhesive
- B. ARDEX FL™ Rapid Set, Flexible, Sanded Grout
- C. ARDEX FG-C™ MICROTEC® Unsanded Grout

2. Latex-Portland Cement Options:

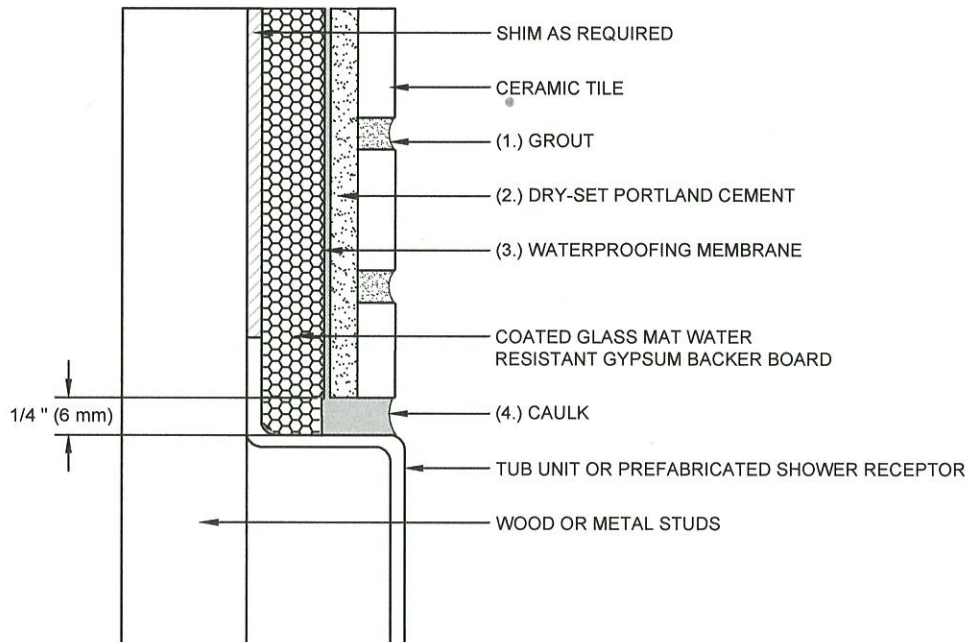
- A. ARDEX X 77™ MICROTEC® Fiber Reinforced Tile and Stone Mortar
- B. ARDEX X 5™ Flexible Tile and Stone Mortar

3. Waterproofing Membrane:

- A. ARDEX 8+9™ Rapid Waterproofing and Crack Isolation Compound
- B. ARDEX SK 175™ Waterproofing Membrane and Vapor Retarder for Tile & Stone Installations

4. Caulk:

- A. ARDEX SX™ 100% Silicone Sealant for Tile and Stone Applications



Scale: N.T.S.

Drawings are developed to be compatible with Tile Council of North America 2013 TCNA Handbook for Ceramic, Glass and Stone Tile Installation.

ARDEX products are listed as options and are substituted for TCA's and TTMAC's listed ANSI and ISO 13007 standards. Please refer to the Tile Council of North America 2013 TCNA Handbook for Ceramic, Glass and Stone Tile Installation for complete instructions and application limitations.

Some installation methods and component materials are not referenced. ARDEX Americas encourages the user to consult all approved resources to ensure a complete assembly.

ARDEX Americas
400 Ardex Park Drive
Aliquippa, PA 15001

Technical Services:
1-800-512-7339
www.ardexamericas.com



Bath Tub Shower Walls

Coated Glass Mat, Water-Resistant
Gypsum Backer Board

AB419
TCNA: B419
TTMAC: 316