



tile & stone
Installation Systems

ARDEX Products Assembly

1. Grout Options:

- A. ARDEX WA™ Epoxy Grout and Adhesive
- B. ARDEX FL™ Rapid Set, Flexible Sanded Grout
- C. ARDEX FG-C™ MICROTEC® Unsanded Grout

2. Latex-Portland Cement Bond Coat:

- A. ARDEX X 77™ MICROTEC® Fiber Reinforced Thin Set Mortar

3. Waterproofing Membrane:

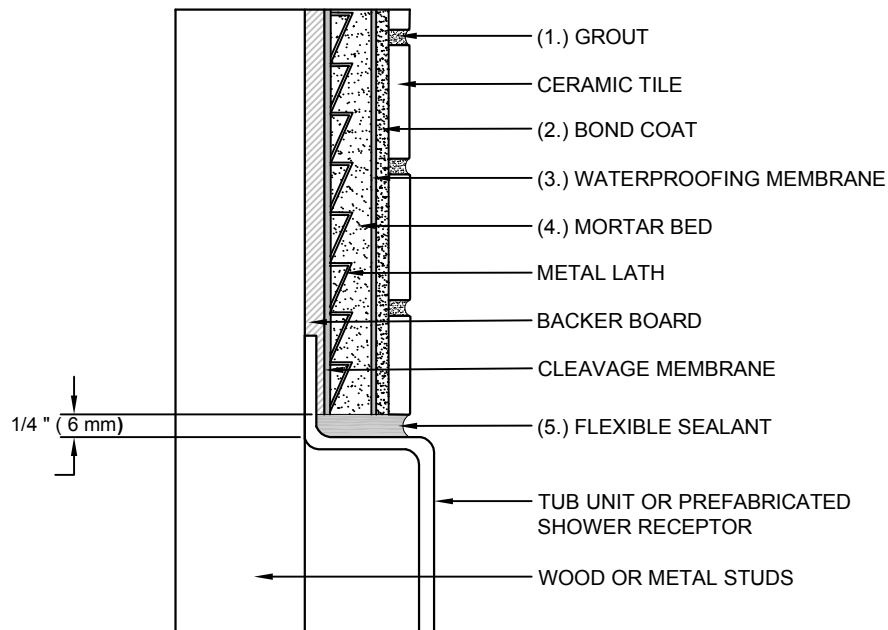
- A. ARDEX 8+9™ Waterproofing and Crack Isolation Compound

4. Mortar Bed:

- A. ARDEX AM 100™ Rapid Set Pre-Tile Smoothing and Ramping Mortar

5. Cauliking and Sealant:

- A. ARDEX SX™ 100% Silicone Sealant for Tile and Stone Applications



*USE OF A MEMBRANE IS REQUIRED. SEE MEMBRANE OPTIONS.

SHOWER RECEPTORS, CURBS, SEATS, ETC., MUST BE PROPERLY WATERPROOFED AND INSTALLED TO AVOID WATER DAMAGE TO ADJACENT BUILDING MATERIALS.

Scale: N.T.S.

Drawings are developed to be compatible with Tile Council of North America 2013 TCNA Handbook for Ceramic, Glass and Stone Tile Installation.

ARDEX products are listed as options and are substituted for TCA's and TTMAC's listed ANSI and ISO 13007 standards. Please refer to the Tile Council of North America 2013 TCNA Handbook for Ceramic, Glass and Stone Tile Installation for complete instructions and application limitations.

Some installation methods and component materials are not referenced. ARDEX Americas encourages the user to consult all approved resources to ensure a complete assembly.

ARDEX Americas
400 Ardex Park Drive
Aliquippa, PA 15001

Technical Services:
1-800-512-7339
www.ardexamericas.com



Bathtub / Shower Walls

Backer Board, Mortar Bed (One Coat Method),
Ceramic Tile

AB440-13

TCNA: B440-13
TTMAC: NA