



ARDEX SYSTEM SOLUTIONS

Architects, Interior Designers and Engineers



TILE & STONE INSTALLATION SYSTEMS

ARDEX German-engineered products are recognized around the world as the innovation and performance leader for tile and stone installation systems.

UNCOUPLING SYSTEMS

ARDEX UI 720™ FLEXBONE®

Floating Uncoupling Membrane

- Loose lay uncoupling system designed to help prevent cracks in grout joints and tile from substrate movement
- Offers 100% uncoupling ability
- Perfect for use over difficult substrates
- Easy removal of tile for frequently changed floor coverings

WATERPROOFING

ARDEX 8+9™

Rapid Waterproofing and Crack Isolation Compound

- ANSI 118.10 and 118.12
- Crack isolation up to 1/8" (3mm)
- IAPMO approved shower pan liner
- Interior and exterior floors and walls

ARDEX S 1-K™

One-Component Waterproofing and Crack Isolation Membrane

- ANSI 118.10 and 118.12
- Single component, load-bearing waterproofing
- Flexible, topside waterproofing for interior floors and walls
- Use for bathrooms, showers and other wet areas prior to the installation of tile

SELF-LEVELING

ARDEX Liquid BackerBoard®

Self-Leveling Underlayment for Interior Wood and Concrete Subfloors

- Portland cement-based self-leveling compound recommended to smooth and level interior wood, concrete, terrazzo and ceramic tile substrates up to 1 1/4" (32mm) thick
- Use over in floor heating systems
- Install tile and stone in as little as 6 hours



US BANKCORP TOWER
PORTLAND, OREGON

ARDEX K 60™ ARDITEX
ARDEX X 77™ MICROTEC®
ARDEX ARDIFIX™
ARDEX DS 70™
ARDEX 8+9™
ARDEX FL™
ARDEX WA™
ARDEX SX™



BILLY BISHOP TORONTO
CITY AIRPORT

TORONTO, CANADA
ARDEX X 77™ MICROTEC®
ARDEX X 4™
ARDEX FL™

ALSO AVAILABLE

ARDEX UI 740™ FLEXBONE® Uncoupling Membrane

ARDEX TL 1000™ Self-Leveling Underlayment

ARDEX AM 100™ Rapid Set Pre-Tile Smoothing and Ramping Mortar

ARDEX SK 175™ Waterproofing Membrane and Vapor Retarder for Tile & Stone Installations

ARDEX P 51™ Primer

ARDEX SX™ 100% Silicone Sealant for Tile and Stone Applications



TILE & STONE MORTARS

ARDEX X 5™

Flexible Tile and Stone Mortar

- ANSI 118.4 and 118.11
- Everyday solution for tile and stone installations
- Formulated as a medium bed, LHT/LFT mortar
- Interior and exterior floor and wall surfaces

ARDEX X 77™

MICROTEC® Fiber Reinforced Tile and Stone Mortar

- ANSI 118.4, 118.11 and 118.15
- Ideal for high traffic and demanding environments
- Formulated for tile and stone, and gauged porcelain tile and slab
- Highly flexible with excellent sag resistance
- Interior and exterior floor and wall surfaces

ARDEX X 90 OUTDOOR™

MicroteC3 Rapid-Set, Flexible Tile and Stone Mortar

- ANSI codes 118.4, 118.11 and 118.15
- Highest levels of freeze/thaw resistance
- Maximum efflorescence resistance
- Cures at temperatures as low as 40°F/5°C
- Withstands driving rain in as little as 2 hrs

GROUTS

ARDEX FL™

Rapid Set, Flexible, Sanded Grout

- ANSI 118.7
- Installed in grout joints from 1/16" to 1/2" (1.5 mm to 12 mm)
- Interior and exterior floor and wall
- Ideal for commercial, residential, swimming pools & other wet areas

ARDEX WA™

High Performance, 100% Solids Epoxy Grout and Adhesive

- ANSI 118.3
- For areas requiring high standards of hygiene and chemical resistance
- Interior, exterior and submerged applications for both floor and wall surfaces
- Solvent free, low VOCs and UV stable
- Available in 35 colors



NEMACOLIN WOODLANDS FALLING ROCK POOL

FARMINGTON, PENNSYLVANIA

ARDEX 8+9™

ARDEX SK MESH™

ARDEX X 32™ MICROTEC®

ARDEX WA™

ARDEX SX™

ALSO AVAILABLE

ARDEX N 23™ MICROTEC® Rapid Set Natural Stone and Tile Mortar

ARDEX X 7 R™ Rapid Set, Flexible Tile and Stone Mortar

ARDEX S 28™ MICROTEC® Rapid-Set, Rapid-Dry, Super-Format Tile and Uncoupling Membrane Mortar

ARDEX FG-C™ MICROTEC® Unsanded Grout

POLISHED CONCRETE SYSTEMS

Green benefits and lower life cycle costs are just a few reasons why the industry is trending toward concrete finished surfaces. Suitable for commercial, light industrial and residential applications, ARDEX provides high-performing products that allow for a wide array of finished surfaces.

ARDEX PC-T™

Polished Concrete Topping

- Self-Leveling Portland cement-based topping, designed to provide a polished concrete surface
- Installed over interior concrete substrates
- High compressive strength 6100 psi (42 MPa)
- Installed from 3/8" to 2" neat (9 mm to 50 mm)
- Available in white, gray and light gray

ARDEX K 521™

Self-Leveling Concrete Topping with Aggregate Surface

- Self-leveling Portland cement-based topping, designed to provide a polished concrete surface with exposed aggregate
- Installed over interior concrete substrates
- High compressive strength 6800 psi (47 MPa)
- Installed from 3/8" to 2" neat (9 mm to 50 mm)
- Available in gray



ALSO AVAILABLE

ARDEX PC 10™ Lithium Hardener for PC-T™ Polished Concrete Topping

ARDEX PC 50™ Lithium Hardener Densifier for Standard Concrete

ARDEX PC FINISH™ Stain & Wear Protection – High Gloss

ARDEX ARDIFIX™ Low Viscosity Rigid Polyurethane Crack & Joint Repair

ARDEX ARDISEAL™ RAPID PLUS Semi-Rigid Joint Sealant

CONCRETE TOPPINGS/DESIGNER FLOORS



Our designer floors provide a fresh concrete surface with numerous design opportunities for architects and designers to add color, patterns and logos for their commercial, light industrial and residential floor applications.

ARDEX SD-T®

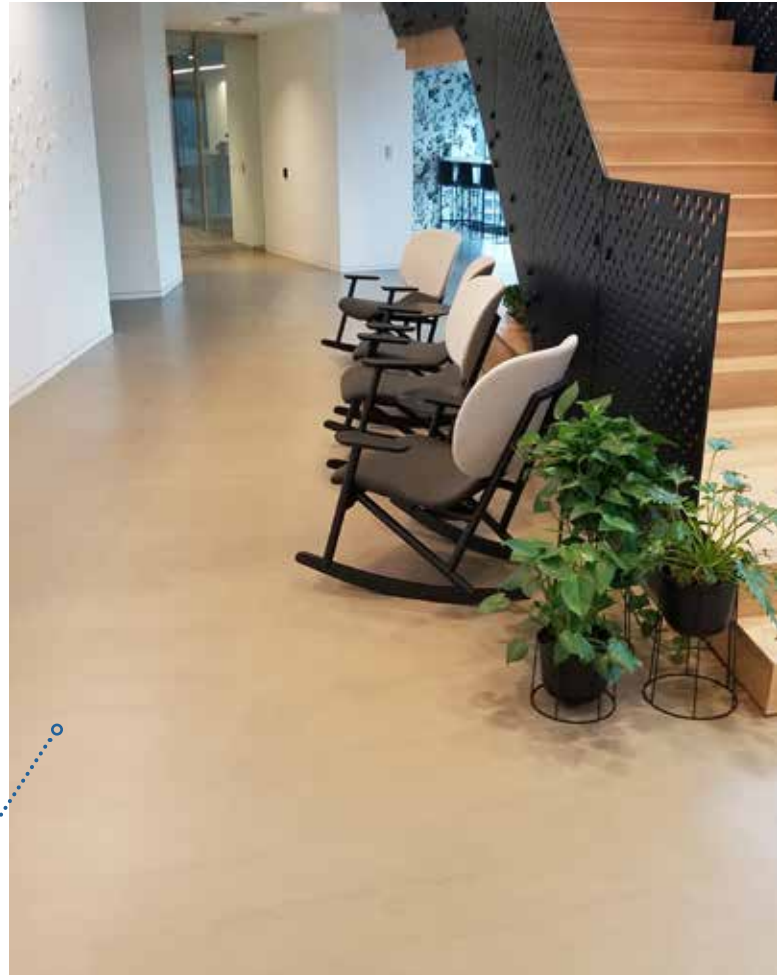
Self-Drying, Self-Leveling Concrete Topping

- Self-drying, self-leveling Portland cement-based wear surface topping recommended to smooth and level interior concrete
- Installed from 1/4" to 2" neat (6 mm to 50 mm), 5" (127 mm) with aggregate
- High compressive strength 6100 psi (42 MPa)
- Available in gray and white, can be stained and integrally dyed

ARDEX SD-M™

Designer Floor Finish™

- Trowelable Portland cement-based wear surface topping applied to interior concrete, terrazzo and existing tile substrates
- Installed from a featheredge to 1/16" (1.5 mm)
- High compressive strength 5000 psi (34 MPa)
- Available in gray and white, can be stained and integrally dyed



CORPORATE OFFICE

CHICAGO, ILLINOIS
INSTALLED BY MTH INDUSTRIES, INC.
ARDEX SD-T™

TRAINING ACADEMY BISTRO

STOCKTON, CALIFORNIA
ARDEX SD-M™
ARDEX PANDOMO® W1



ALAMEDA DATA SERVER PROJECT

LOS ANGELES, CALIFORNIA
ARDEX PC-T™
ARDEX PC 10™
ARDEX PC FINISH™
ARDEX ARDIFIX™
ARDEX EP 2000™

ALSO AVAILABLE

ARDEX EP 2000™ Substrate Preparation Epoxy Primer

ARDEX P 51™ Primer

ARDEX K 520™ Self-Leveling Concrete Topping

MOISTURE CONTROL



Our complete line of moisture control products are fast-track solutions backed by industry-leading warranties.

ARDEX VR 98™

Fast-Track, One-Component Moisture Vapor Retarder

- One-component, water-based, two-coat system formulated to suppress residual moisture in concrete
- For RH readings up to 98%
- Install underlayments in as little as 2 hours after the second coat

ARDEX MC™ RAPID

One-Coat Moisture Control System for Concrete to Receive ARDEX Products

- One-coat, 100% solids epoxy moisture management system used to suppress excessive moisture vapor emissions in new or existing concrete
- For RH readings up to 100%
- ASTM E96 – 0.06 perms

○.....○ AMITY FIREHALL (INSTALLATION)

WASHINGTON, PENNSYLVANIA

ARDEX VR 98™

HENRY® 430 ClearPro™

HENRY®

HENRY

The W.W. HENRY Company, a division of ARDEX Americas, is one of the world's largest manufacturers of adhesives for all types of flooring installations. HENRY focuses on producing GreenLine™ adhesives, which reduce the environmental impact associated with flooring adhesives. HENRY products are backed by unmatched customer service, expert technical support and a comprehensive warranty program.

HENRY® 695

High RH Vinyl Flooring Adhesive

- Ideal for installation of LVT, plank and vinyl-backed sheet flooring
- Moisture resistant up to 95% RH
- Use as a pressure-sensitive or wet-set adhesive
- Solvent-free, low odor and low emissions

ALSO AVAILABLE

HENRY® 430 ClearPro™ Clear VCT Floor Adhesive

HENRY® 440 Cove Base Adhesive

HENRY® 650 R

Releasable Bond Pressure Sensitive Adhesive

- Ideal for the installation of fiberglass-reinforced sheet vinyl flooring, solid vinyl tile (LVT), solid vinyl plank (LVP), vinyl-backed sheet flooring and vinyl-backed carpet tile
- Moisture resistant up to 90% RH
- Solvent-free, non-flammable
- Releasable or permanent installations

HENRY® 1171N SureLock™ Acrylic Urethane Wood Flooring Adhesive

HENRY® 412 Rubber Flooring Adhesive

FOR A COMPLETE PRODUCT LISTING VISIT: WWW.WWHENRY.COM



SUBFLOOR PREPARATION

ARDEX pioneered self-leveling underlayments in the marketplace and revolutionized the industry. Today our self-levelers are the industry benchmark with innovative, self-leveling solutions that perform in any environment.

ARDEX K 15®

Premium Self-Leveling Underlayment

- Portland-cement based self-leveling compound recommended to smooth and level interior concrete, terrazzo, ceramic and quarry tile, epoxy coating systems, wooden and metal substrates
- Installs up to 1 1/2" neat (38 mm), 5" (127 mm) with aggregate
- Floorcovering can be applied in 16 hours, moisture-insensitive tile and stone in 6 hours

ARDEX V 1200™

Self-Leveling Underlayment

- Portland-cement based self-leveling compound recommended to smooth and level concrete, terrazzo, ceramic and quarry tile, and epoxy coating systems
- Installs up to 1 1/4" (32 mm) neat
- Floorcovering can be applied in 24 hours, moisture-insensitive tile and stone in 6 hours

ARDEX K 60™ ARDITEX

Rapid Setting Latex Smoothing and Leveling Compound

- Portland-cement based self-leveling compound recommended to smooth and level concrete, terrazzo, wood, ceramic and quarry tile, steel and select epoxy coating systems
- Installs from 1/16" to 1/2" (1.5 mm to 12 mm)
- Mixed using a latex additive, no water required for mixing
- No mechanical profiling or priming needed in most applications

ARDEX K 22 F™

High Flow, Fiber Reinforced, Self-Leveling Underlayment

- Blend of gypsum and Portland cement-based recommended to smooth and level above-grade floors
- Use over concrete, gypsum, wood, and well-bonded VCT
- Installs up to 1 1/4" (32 mm) neat and 2" (50 mm) with aggregate
- Floorcovering can be installed in as little as 24 hours



ALSO AVAILABLE

ARDEX FEATHER FINISH® Self-Drying, Cement-Based Finish Underlayment

ARDEX K 10™ Reactivable™, High-Flow, Self-Leveling Underlayment

ANN + ROBERT H. LURIE
CHILDREN'S HOSPITAL OF CHICAGO CHICAGO, ILLINOIS

ARDEX FEATHER FINISH® (1 million sq. ft.)

ARDEX K 15®, ARDEX SD-P®, ARDEX MC™ ULTRA, ARDEX ERM™

FOR A COMPLETE PRODUCT LISTING VISIT: WWW.ARDEXAMERICAS.COM

ARDEX CONCRETE MANAGEMENT SYSTEMS™ (ACMS)



ACMS™ is a ground-breaking, specified finishing method for new concrete construction which addresses challenges like moisture, flatness and levelness. It is comprised of seven steps (listed below), and includes an integrated system of moisture control and self-leveling underlayment products.

ACMS overcomes challenges that arise during construction due to the disparity between Division 3 (concrete) and Division 9 (finishes) and can narrow the slab curing time to just a few days.

The ACMS rough screed process option can be combined with the ARDEX ARDIFLO™ pumping system to allow you to meet the most demanding flatness and levelness tolerances for flooring.

INOVA WOMEN AND CHILDREN'S HOSPITAL
FALLS CHURCH, VIRGINIA
ACMS™
ARDEX V 1200™
ARDEX ARDIFIX™
ARDEX ARDISEAL™ RAPID PLUS
AMP® 200
Rover®



ENGINEERED CONCRETE REPAIR SYSTEMS



Comprehensive restoration capabilities for structural and non-structural repairs including: exterior wear surface repair and restoration, horizontal, vertical and overhead repairs, crack repair and joint sealing.

STRUCTURAL REPAIR MORTARS

ARDEX ERM™ Exterior Ramp Mortar

Trowel-Grade Horizontal Concrete Repair Mortar

- Portland cement-based, trowel-grade, structural repair mortar used to repair interior and exterior concrete surfaces
- Holds shape for repairing ramps and balconies
- Installs from 1/4" to 2" (6 mm to 51 mm) and up to 8" (203 mm) with the addition of aggregate
- Freeze thaw resistant

ARDEX TRM™ Transportation Repair Mortar

Fast-Setting Horizontal Concrete Repair Mortar

- Fast-setting formable, pourable, pumpable Portland cement based structural repair mortar for interior and exterior concrete repair
- Allows foot traffic in 2 hours
- Installs from 1/2" to 4" (6 mm to 102 mm) neat, 8" (203 mm) with aggregate

ENGINEERED TOPPING

ARDEX CD™

Concrete Dressing

- Portland cement based concrete resurfacing compound
- Used to produce a new wear layer over existing concrete and fill in small spalls and gouges
- Ideal for sidewalks, patios, driveways parking garages or various exterior concrete applications
- Available in gray with fine or coarse aggregate, can be stained and integrally colored

ARDEX TWP™

Tilt Wall Patch and Finishing Compound for Vertical Concrete Walls

- Portland cement based patch used for filling and smoothing interior and exterior vertical concrete and masonry surfaces
- Hardens quickly without shrinking
- Can be sealed or painted immediately after surface hardens

ALSO AVAILABLE

ARDEX BACA™ Bonding & Anti-Corrosion Agent

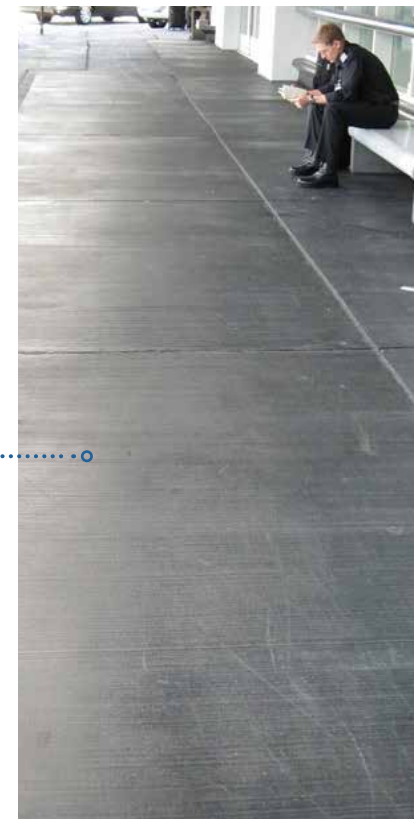
ARDEX B 20™ Overhead & Vertical Repair Mortar with Corrosion Inhibitor

ARDEX OVP™ Finishing Compound for Overhead and Vertical Concrete Walls

ARDEX FDM™ Full Depth Repair Mortar Concrete Repair Mortar with Corrosion Inhibitor



PRIVATE RESIDENCE
PITTSBURGH, PENNSYLVANIA
ARDEX CP™
ARDEX CD™
ARDEX CG Concrete Guard™

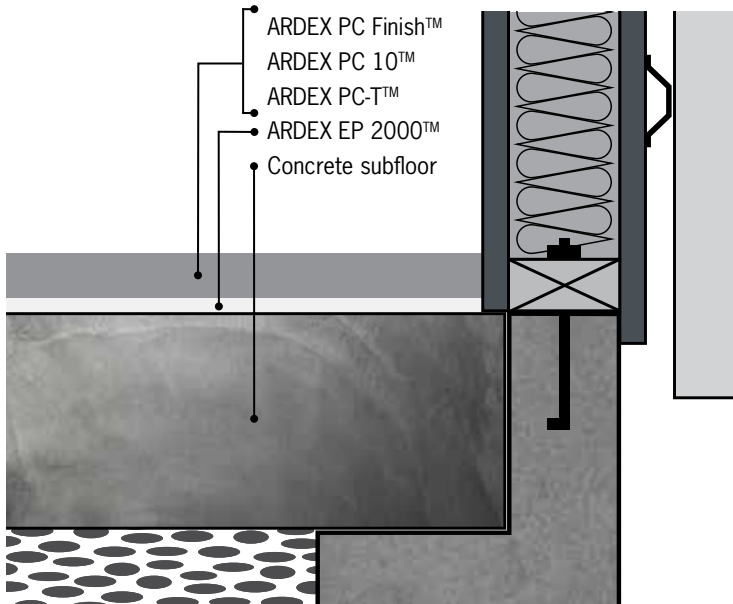


SAN FRANCISCO
INTERNATIONAL AIRPORT
(DEPARTURE AREA
SIDEWALK REPAIR)
SAN FRANCISCO, CALIFORNIA
ARDEX CD FINE™

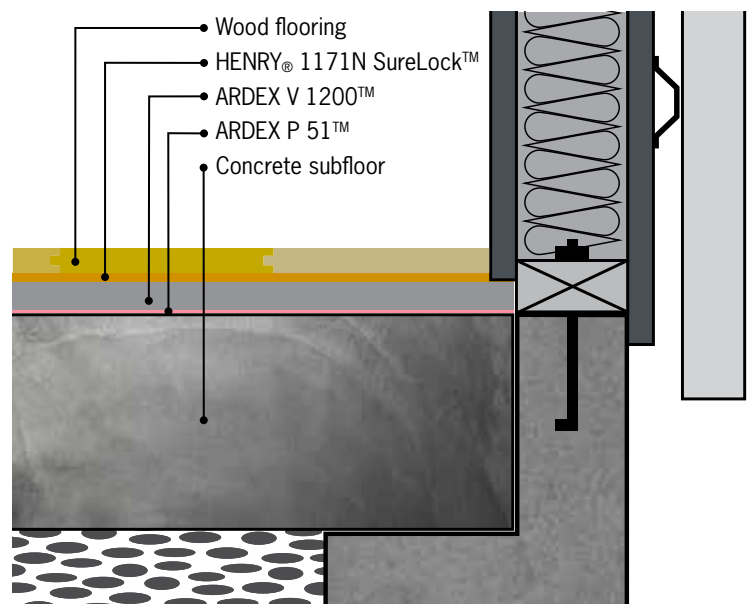
SAMPLE ARDEX SYSTEMS



Polished Topping Sample System

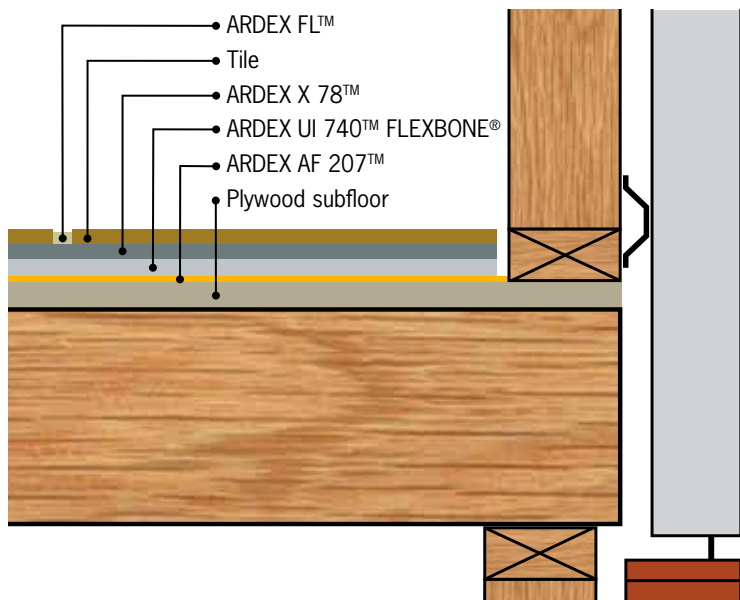


Wood Floor Sample System

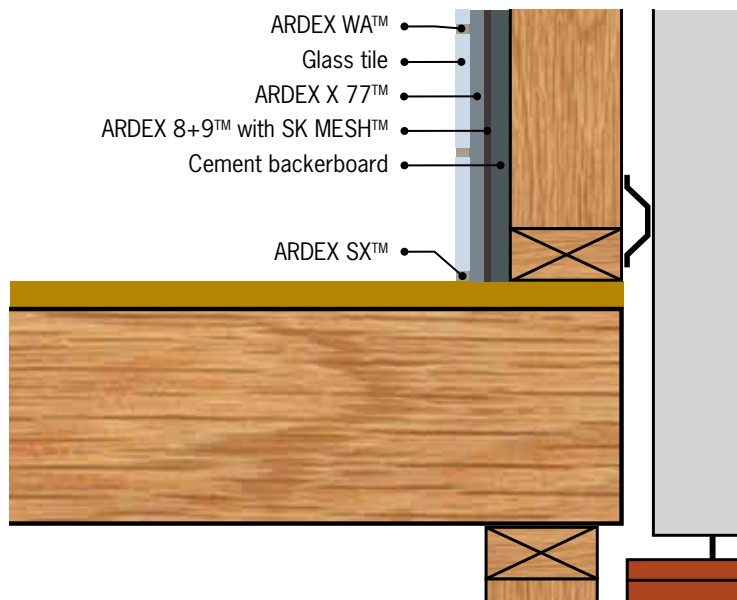




Bathroom Floor Sample System



Shower Wall Sample System





The vision of the ARDEX Group is to be one of the world's leading solution providers of high-performance specialty building materials.

PERFORMANCE

ARDEX is a system solution provider of high-performance specialty building materials. We will be the premium supplier in each of our segments. We strive for market leadership in defined markets worldwide.

FAMILY-OWNED BUSINESS

As a family-owned company we encourage the development of team spirit and identification with the culture of the business. We are proud of our history.

ENVIRONMENTAL COMMITMENT

The ARDEX Group has committed to building a better future by reducing our carbon footprint and maximizing our sustainability in areas of product development, manufacturing and consumer health and safety.

WARRANTY

We stand behind all of our products with industry-unique warranty systems to include products and labor costs.



ARDEX Americas
400 Ardex Park Drive
Aliquippa, PA 15001



p: 724-203-5000



www.ardexamericas.com
info@ardexamericas.com



ARDEX Canada
2400 Lucknow Drive Unit 33
Mississauga, Ontario L5S 1T9



p: 905-673-2739



www.ardex.ca